

## ERp29 Rabbit mAb

Catalog No: #49878

Package Size: #49878-1 50ul #49878-2 100ul

Orders: order@signalwayantibody.com

Support: tech@signalwayantibody.com

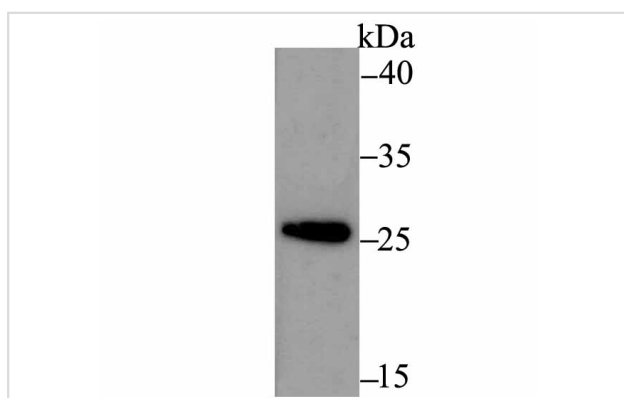
## Description

Product Name	ERp29 Rabbit mAb
Host Species	Recombinant Rabbit
Clonality	Monoclonal antibody
Clone No.	JG34-42
Purification	ProA affinity purified
Applications	WB,ICC,IF,IHC
Species Reactivity	Hu, Ms, Rt
Immunogen Description	Recombinant protein within human ERp29 aa 1-150.
Other Names	C12orf8 antibody Chromosome 12 open reading frame 8 antibody Endoplasmic reticulum luminal protein ERp28 antibody Endoplasmic reticulum protein 29 antibody Endoplasmic reticulum protein 29 isoform 1 antibody Endoplasmic reticulum protein ERp29 antibody Endoplasmic reticulum resident protein 28 antibody Endoplasmic reticulum resident protein 29 antibody Endoplasmic reticulum resident protein 31 antibody Epididymis secretory protein Li 107 antibody ERp28 antibody ERP29_HUMAN antibody ERp31 antibody HEL S 107 antibody PDI-DB antibody PDIA9 antibody Protein disulfide isomerase family A member 9 antibody
Accession No.	Swiss-Prot#:P30040
Uniprot	P30040
GeneID	10961;
Calculated MW	29 kDa
Formulation	1*TBS (pH7.4), 1%BSA, 40%Glycerol. Preservative: 0.05% Sodium Azide.
Storage	Store at -20°C

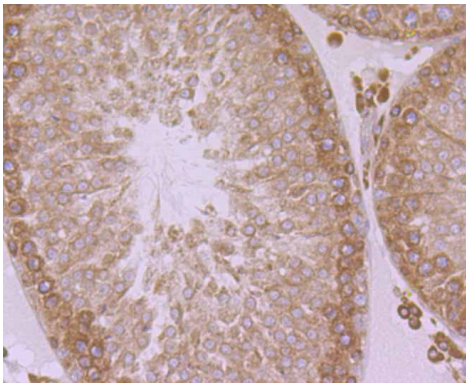
## Application Details

WB: 1:500-1:1,000 IHC: 1:50-1:200 ICC: 1:50-1:200

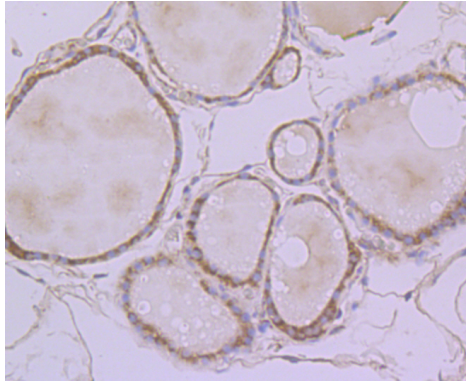
## Images



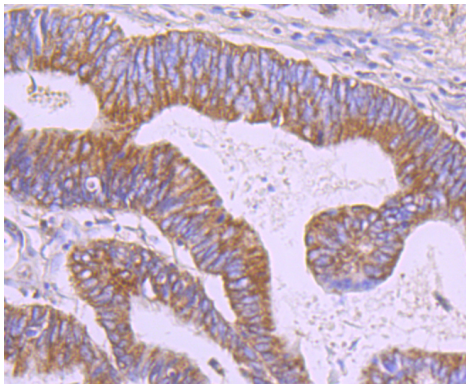
Western blot analysis of ERp29 on THP-1 cell using anti-ERp29 antibody at 1/500 dilution.



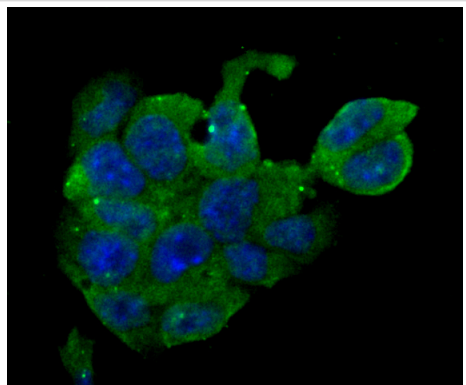
Immunohistochemical analysis of paraffin-embedded rat testis tissue using anti-ERp29 antibody. Counter stained with hematoxylin.



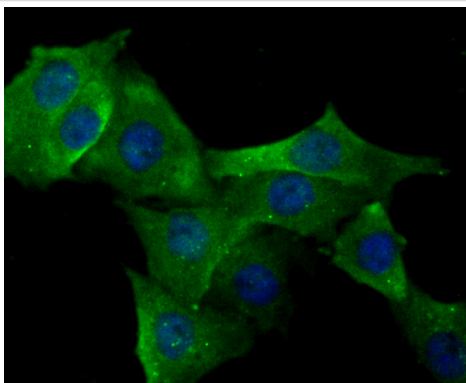
Immunohistochemical analysis of paraffin-embedded human thyroid gland tissue using anti-ERp29 antibody. Counter stained with hematoxylin.



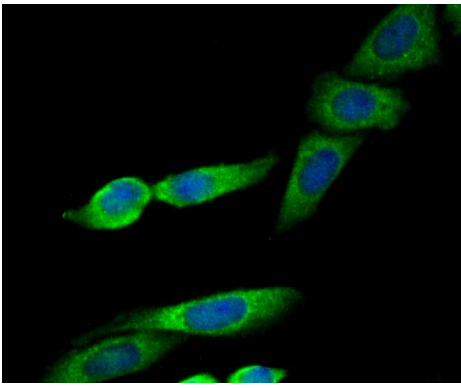
Immunohistochemical analysis of paraffin-embedded human colon cancer tissue using anti-ERp29 antibody. Counter stained with hematoxylin.



ICC staining ERp29 in F9 cells (green). The nuclear counter stain is DAPI (blue). Cells were fixed in paraformaldehyde, permeabilised with 0.25% Triton X100/PBS.



ICC staining ERp29 in PMVEC cells (green). The nuclear counter stain is DAPI (blue). Cells were fixed in paraformaldehyde, permeabilised with 0.25% Triton X100/PBS.



ICC staining ERp29 in SiHa cells (green). The nuclear counter stain is DAPI (blue). Cells were fixed in paraformaldehyde, permeabilised with 0.25% Triton X100/PBS.

## Background

ERp29 is a reticuloplasm, a protein which resides in the lumen of the endoplasmic reticulum (ER). The protein shows sequence similarity to the protein disulfide-isomerase family. However, it lacks the thioredoxin motif characteristic of this family, suggesting that this protein does not function as a disulfide isomerase. The protein dimerizes and is thought to play a role in the processing of secretory proteins within the ER. Alternative splicing results in multiple transcript variants encoding different isoforms.

## References

Note: This product is for in vitro research use only