

Angptl1/2 Polyclonal Antibody

Catalog No: #41596

Package Size: #41596-1 50ul #41596-2 100ul

Orders: order@signalwayantibody.comSupport: tech@signalwayantibody.com

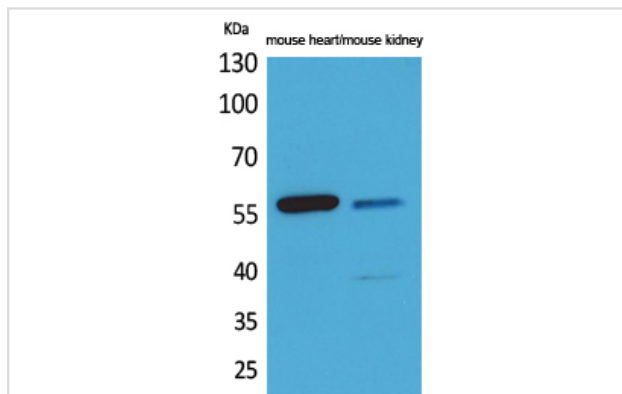
Description

Product Name	Angptl1/2 Polyclonal Antibody
Host Species	Rabbit
Clonality	Polyclonal
Purification	The antibody was affinity-purified from rabbit antiserum by affinity-chromatography using epitope-specific immunogen.
Applications	WB
Species Reactivity	Hu Ms Rt
Specificity	Angptl1/2 Polyclonal Antibody detects endogenous levels of Angptl1/2 protein.
Immunogen Type	peptide
Immunogen Description	Synthesized peptide derived from the Internal region of human Angptl1/2.
Target Name	Angptl1/2
Other Names	ANGPTL1; ANG3; ANGPT3; ARP1; PSEC0154; Angiopoietin-related protein 1; Angiopoietin-3; ANG-3; Angiopoietin-like protein 1; ANGPTL2; ARP2; Angiopoietin-related protein 2; Angiopoietin-like protein 2
Accession No.	Swiss-Prot: O95841NCBI Gene ID: 9068
Uniprot	O95841
GeneID	9068;
SDS-PAGE MW	60kd
Concentration	1mg/ml
Formulation	Liquid in PBS containing 50% glycerol, 0.5% BSA and 0.02% sodium azide.
Storage	Store at -20°C/1 year

Application Details

Western Blot: 1/500 - 1/2000.

Images



Western Blot analysis of mouse heart mouse kidney cells using Angptl1/2 Polyclonal Antibody

Note: This product is for in vitro research use only