

Syntrophin alpha 1 Rabbit mAb

Catalog No: #49887

Package Size: #49887-1 50ul #49887-2 100ul

Orders: order@signalwayantibody.comSupport: tech@signalwayantibody.com

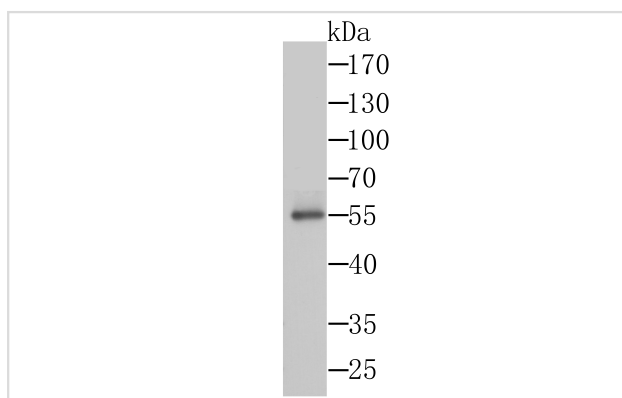
Description

Product Name	Syntrophin alpha 1 Rabbit mAb
Host Species	Recombinant Rabbit
Clonality	Monoclonal antibody
Clone No.	JG35-62
Purification	ProA affinity purified
Applications	WB,ICC,IF,IHC,FC
Species Reactivity	Hu, Ms
Immunogen Description	Recombinant protein within human Syntrophin alpha 1 aa 1-200.
Other Names	59 kDa dystrophin-associated protein A1 acidic component 1 antibody Acidic alpha 1 syntrophin antibody Alpha 1 syntrophin antibody Alpha-1-syntrophin antibody dJ1187J4.5 antibody Dystrophin associated protein A1 59kDa acidic component antibody LQT12 antibody OTTHUMP0000030650 antibody Pro-TGF-alpha cytoplasmic domain-interacting protein 1 antibody SNT1 antibody Snta1 antibody SNTA1_HUMAN antibody Syntrophin 1 antibody Syntrophin-1 antibody TACIP1 antibody
Accession No.	Swiss-Prot#:Q13424
Uniprot	Q13424
GeneID	6640;
Calculated MW	54 kDa
Formulation	1*TBS (pH7.4), 1%BSA, 40%Glycerol. Preservative: 0.05% Sodium Azide.
Storage	Store at -20°C

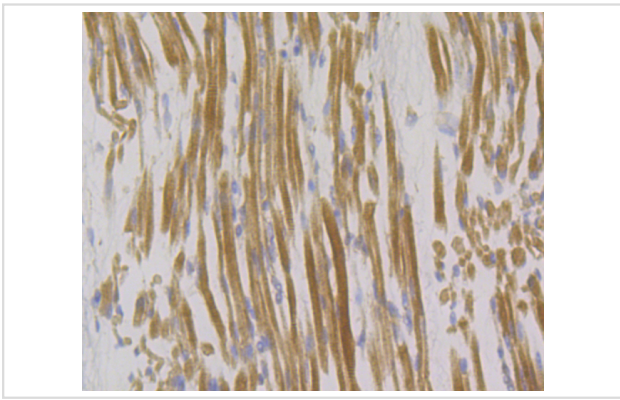
Application Details

WB: 1:500 IHC: 1:50-1:200 ICC: 1:50-1:200FC: 1:50-1:200

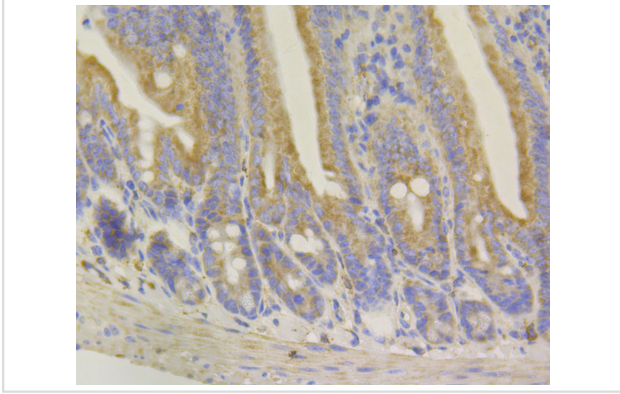
Images



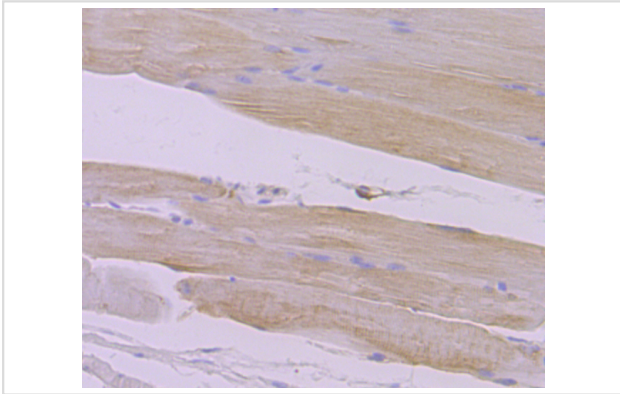
Western blot analysis of Syntrophin alpha 1 on SiHa cells lysates using anti-Syntrophin alpha 1 antibody at 1/1,000 dilution.



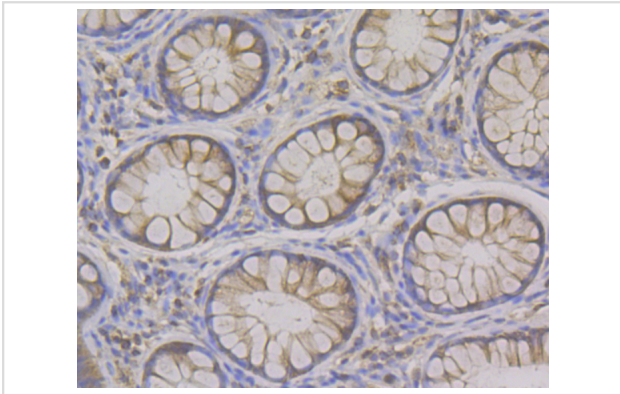
Immunohistochemical analysis of paraffin-embedded human skeletal muscle tissue using anti-Syntrophin alpha 1 antibody. Counter stained with hematoxylin.



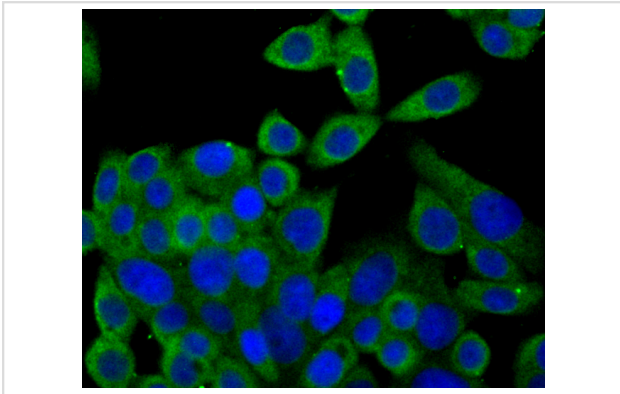
Immunohistochemical analysis of paraffin-embedded mouse colon tissue using anti-Syntrophin alpha 1 antibody. Counter stained with hematoxylin.



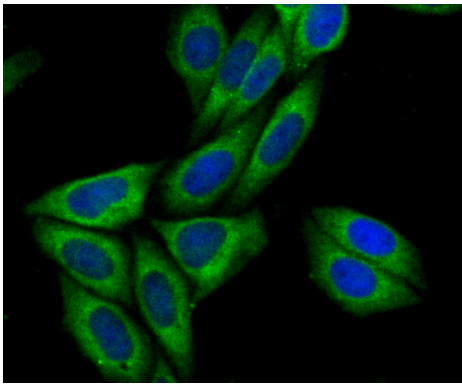
Immunohistochemical analysis of paraffin-embedded mouse skeletal muscle tissue using anti-Syntrophin alpha 1 antibody. Counter stained with hematoxylin.



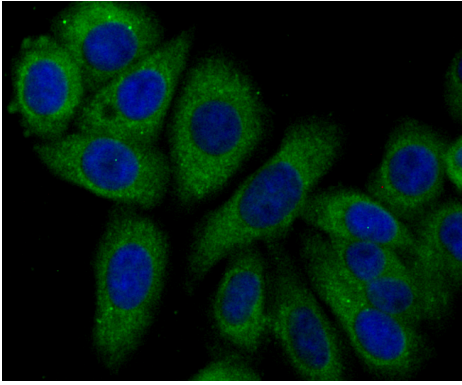
Immunohistochemical analysis of paraffin-embedded human colon tissue using anti-Syntrophin alpha 1 antibody. Counter stained with hematoxylin.



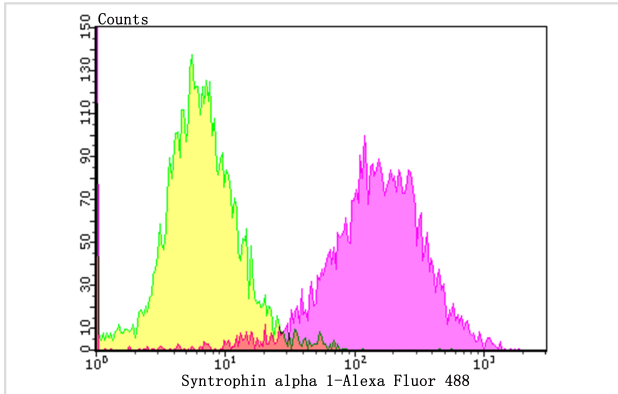
ICC staining Syntrophin alpha 1 in LOVO cells (green). The nuclear counter stain is DAPI (blue). Cells were fixed in paraformaldehyde, permeabilised with 0.25% Triton X100/PBS.



ICC staining Syntrophin alpha 1 in SiHa cells (green). The nuclear counter stain is DAPI (blue). Cells were fixed in paraformaldehyde, permeabilised with 0.25% Triton X100/PBS.



ICC staining Syntrophin alpha 1 in HepG2 cells (green). The nuclear counter stain is DAPI (blue). Cells were fixed in paraformaldehyde, permeabilised with 0.25% Triton X100/PBS.



Flow cytometric analysis of LOVO cells with Syntrophin alpha 1 antibody at 1/100 dilution (purple) compared with an unlabelled control (cells without incubation with primary antibody; yellow). Alexa Fluor 488-conjugated goat anti-rabbit IgG was used as the secondary antibody.

Background

The syntrophins are PDZ-domain-containing proteins that facilitate the recruitment of signaling proteins such as NOS1 to the dystrophin-associated protein complex. The syntrophin family are structurally related proteins that contain multiple protein interaction motifs. Syntrophins associate directly with dystrophin, the product of the Duchenne muscular dystrophy locus, and its homologs. α -Syntrophin has an important role in synapse formation and in the organization of utrophin, acetylcholine receptor and acetylcholinesterase at the neuromuscular synapse. Specifically, NOS1 binds to α -Syntrophin at muscle sarcolemma. β 2-Syntrophin is a modular adapter. In muscle cells, β 2-Syntrophin interacts with members of the dystrophin family, which includes utrophin.

References

Note: This product is for in vitro research use only