

CUL-4B Polyclonal Antibody

Catalog No: #41597

Package Size: #41597-1 50ul #41597-2 100ul

Orders: order@signalwayantibody.com

Support: tech@signalwayantibody.com

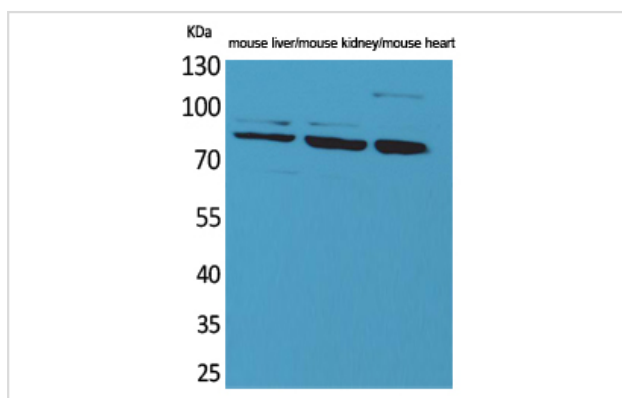
Description

Product Name	CUL-4B Polyclonal Antibody
Host Species	Rabbit
Clonality	Polyclonal
Purification	The antibody was affinity-purified from rabbit antiserum by affinity-chromatography using epitope-specific immunogen.
Applications	WB
Species Reactivity	Hu Ms Rt
Specificity	CUL-4B Polyclonal Antibody detects endogenous levels of CUL-4B protein.
Immunogen Type	peptide
Immunogen Description	Synthesized peptide derived from the Internal region of human CUL-4B.
Target Name	CUL-4B
Other Names	CUL4B; KIAA0695; Cullin-4B; CUL-4B
Accession No.	Swiss-Prot: Q13620NCBI Gene ID: 8450
Uniprot	Q13620
GeneID	8450;
SDS-PAGE MW	110kd
Concentration	1mg/ml
Formulation	Liquid in PBS containing 50% glycerol, 0.5% BSA and 0.02% sodium azide.
Storage	Store at -20°C/1 year

Application Details

Western Blot: 1/500 - 1/2000.

Images



Western Blot analysis of mouse liver mouse kidney mouse heart cells using CUL-4B Polyclonal Antibody

Note: This product is for in vitro research use only