

## NDUFB8 Rabbit mAb

Catalog No: #49897

Package Size: #49897-1 50ul #49897-2 100ul

Orders: order@signalwayantibody.com

Support: tech@signalwayantibody.com

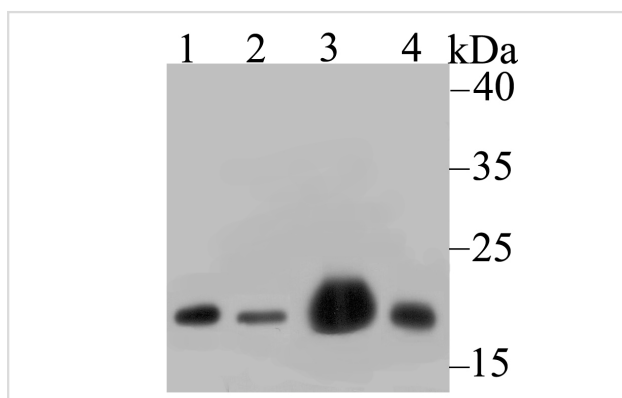
## Description

Product Name	NDUFB8 Rabbit mAb
Host Species	Recombinant Rabbit
Clonality	Monoclonal antibody
Clone No.	JG61-36
Purification	ProA affinity purified
Applications	WB,IP,IHC,FC,ICC
Species Reactivity	Hu, Ms, Rt
Immunogen Description	Recombinant protein within human NDUFB8 aa 30-130.
Other Names	ASHI antibody CI-ASHI antibody Complex I ASHI subunit antibody Complex I-ASHI antibody mitochondrial antibody NADH dehydrogenase (ubiquinone) 1 beta subcomplex 8 19kDa antibody NADH dehydrogenase [ubiquinone] 1 beta subcomplex subunit 8 antibody NADH dehydrogenase [ubiquinone] 1 beta subcomplex subunit 8 mitochondrial antibody NADH-ubiquinone oxidoreductase ASHI subunit antibody NDUB8_HUMAN antibody NDUFB8 antibody
Accession No.	Swiss-Prot#:O95169
Uniprot	O95169
GeneID	4714;
Calculated MW	17 kDa
Formulation	1*TBS (pH7.4), 1%BSA, 40%Glycerol. Preservative: 0.05% Sodium Azide.
Storage	Store at -20°C

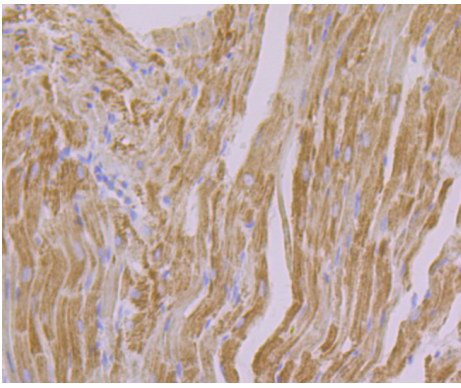
## Application Details

WB: 1:500-1:2,000 IHC: 1:50-1:200 ICC: 1:50IP: 1:10-1:50FC: 1:50-1:100

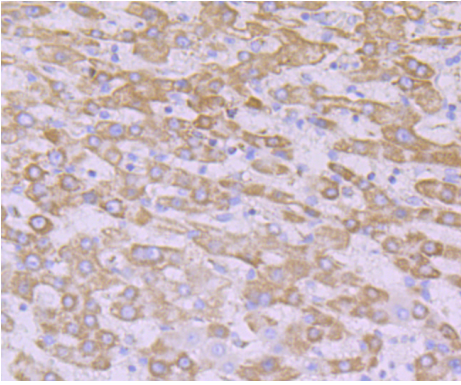
## Images



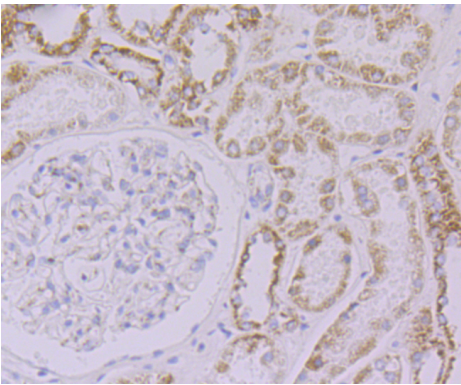
Western blot analysis of NDUFB8 on different lysates using anti-NDUFB8 antibody at 1/1,000 dilution. Positive control:  
 Lane 1: 293      Lane 2: A549    Lane 3: Mouse heart    Lane 4: Rat spleen



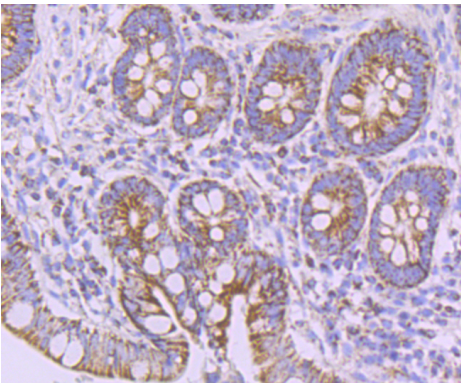
Immunohistochemical analysis of paraffin-embedded rat heart tissue using anti-NDUFB8 antibody. Counter stained with hematoxylin.



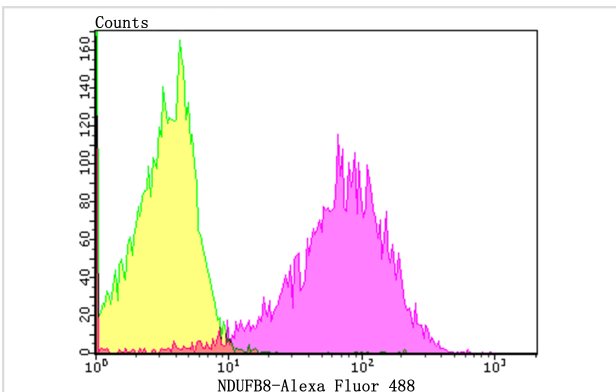
Immunohistochemical analysis of paraffin-embedded human liver cancer tissue using anti-NDUFB8 antibody. Counter stained with hematoxylin.



Immunohistochemical analysis of paraffin-embedded human kidney tissue using anti-NDUFB8 antibody. Counter stained with hematoxylin.



Immunohistochemical analysis of paraffin-embedded human small intestine tissue using anti-NDUFB8 antibody. Counter stained with hematoxylin.



Flow cytometric analysis of 293T cells with NDUFB8 antibody at 1/100 dilution (yellow) compared with an unlabelled control (cells without incubation with primary antibody; purple). Alexa Fluor 488-conjugated goat anti-rabbit IgG was used as the secondary antibody.

## Background

---

Accessory subunit of the mitochondrial membrane respiratory chain NADH dehydrogenase (Complex I), that is believed not to be involved in catalysis. Complex I functions in the transfer of electrons from NADH to the respiratory chain. The immediate electron acceptor for the enzyme is believed to be ubiquinone.

## References

---

---

Note: This product is for in vitro research use only