

## UQCRFS1 Rabbit mAb

Catalog No: #49899

Package Size: #49899-1 50ul #49899-2 100ul

Orders: [order@signalwayantibody.com](mailto:order@signalwayantibody.com)Support: [tech@signalwayantibody.com](mailto:tech@signalwayantibody.com)

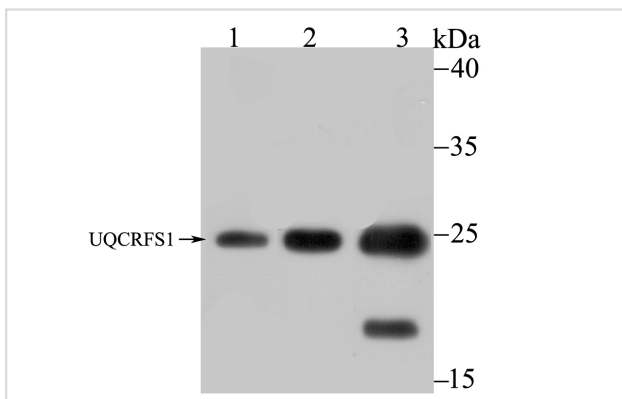
## Description

Product Name	UQCRFS1 Rabbit mAb
Host Species	Recombinant Rabbit
Clonality	Monoclonal antibody
Clone No.	JG62-31
Purification	ProA affinity purified
Applications	WB,ICC,IF,IHC,FC,IP
Species Reactivity	Hu, Ms, Rt
Immunogen Description	Recombinant protein within human UQCRFS1 aa 100 to the C-terminus.
Other Names	Complex III subunit 5 antibody    Complex III subunit IX antibody    Cytochrome b c1 complex subunit Rieske mitochondrial antibody    Cytochrome b-c1 complex subunit 11 antibody    Cytochrome b-c1 complex subunit 5 antibody    Cytochrome b6f complex iron sulfur subunit, chloroplastic antibody    petC antibody    PGR1 antibody    Plastohydroquinone:plastocyanin oxidoreductase iron sulfur protein antibody    Proton gradient regulation protein 1 antibody    Rieske iron sulfur protein antibody    Rieske iron-sulfur protein antibody    RIP1 antibody    RIS1 antibody    RISP antibody    Ubiquinol cytochrome C reductase rieske iron sulphur antibody    Ubiquinol cytochrome c reductase Rieske iron-sulfur polypeptide 1 antibody    Ubiquinol-cytochrome c reductase 8 kDa protein antibody    Ubiquinol-cytochrome c reductase iron-sulfur subunit antibody    UCRI_HUMAN antibody    UQCR5 antibody    UQCRFS1 antibody
Accession No.	Swiss-Prot#:P47985
Uniprot	P47985
GeneID	7386;
Calculated MW	21 kDa
Formulation	1*TBS (pH7.4), 1%BSA, 40%Glycerol. Preservative: 0.05% Sodium Azide.
Storage	Store at -20°C

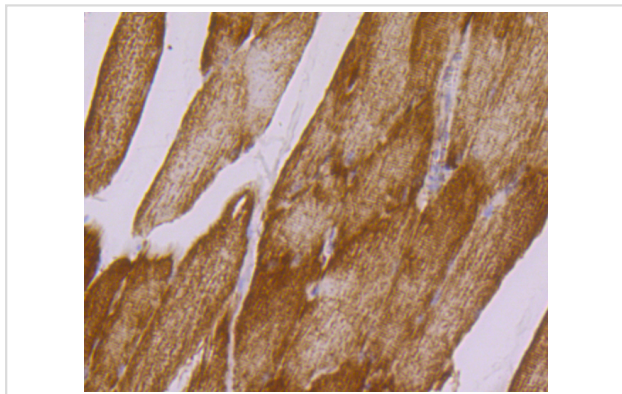
## Application Details

WB: 1:500-1:2,000 IHC: 1:50-1:200 ICC: 1:500-1:2,000FC: 1:10-1:50

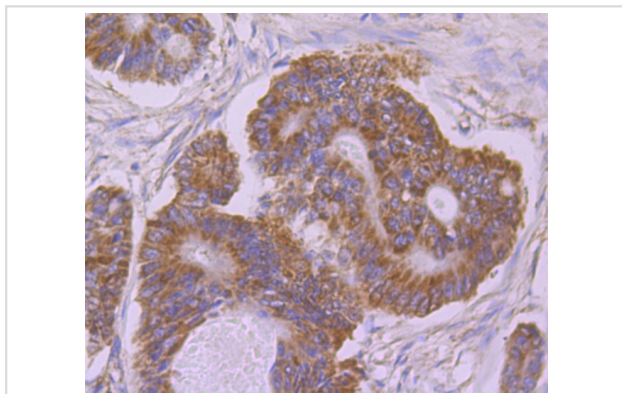
## Images



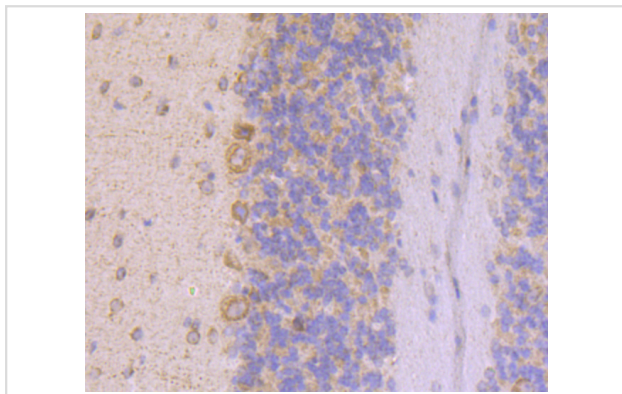
Western blot analysis of UQCRFS1 on different lysates using anti-UQCRFS1 antibody at 1/1,000 dilution. Positive control:  
Lane 1: A549      Lane 2: 293 Lane 3: Mouse kidney



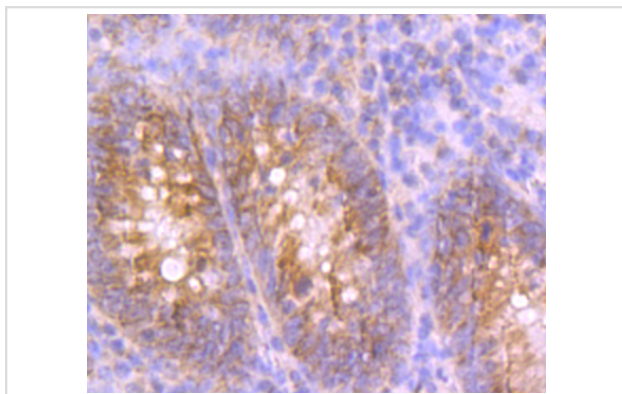
Immunohistochemical analysis of paraffin-embedded rat skeletal muscle tissue using anti-UQCRFS1 antibody. Counter stained with hematoxylin.



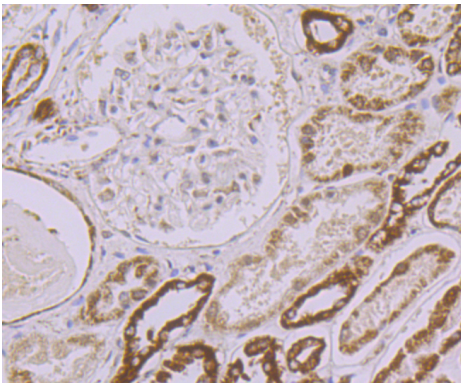
Immunohistochemical analysis of paraffin-embedded human colon cancer tissue using anti-UQCRFS1 antibody. Counter stained with hematoxylin.



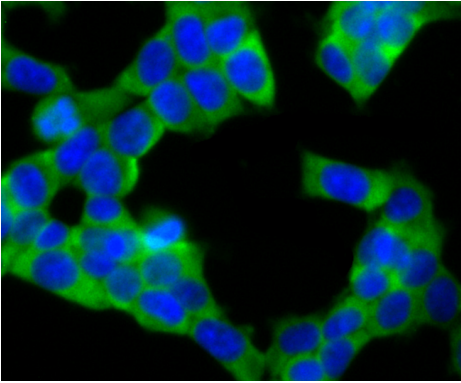
Immunohistochemical analysis of paraffin-embedded mouse cerebellum tissue using anti-UQCRFS1 antibody. Counter stained with hematoxylin.



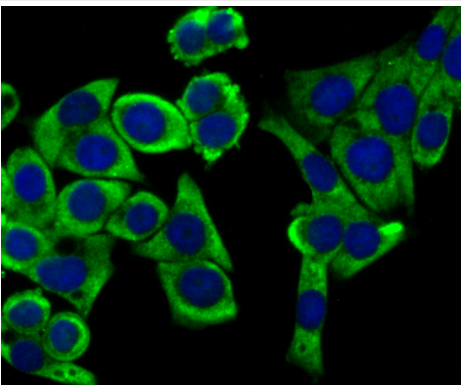
Immunohistochemical analysis of paraffin-embedded human appendix tissue using anti-UQCRFS1 antibody. Counter stained with hematoxylin.



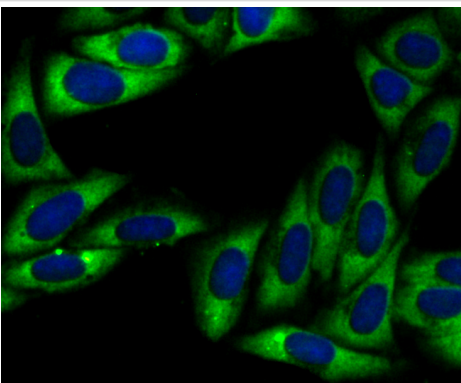
Immunohistochemical analysis of paraffin-embedded human kidney tissue using anti-UQCRFS1 antibody. Counter stained with hematoxylin.



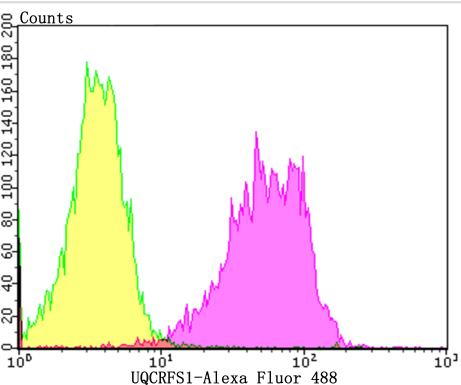
ICC staining UQCRFS1 in 293T cells (green). The nuclear counter stain is DAPI (blue). Cells were fixed in paraformaldehyde, permeabilised with 0.25% Triton X100/PBS.



ICC staining UQCRFS1 in LOVO cells (green). The nuclear counter stain is DAPI (blue). Cells were fixed in paraformaldehyde, permeabilised with 0.25% Triton X100/PBS.



ICC staining UQCRFS1 in SiHa cells (green). The nuclear counter stain is DAPI (blue). Cells were fixed in paraformaldehyde, permeabilised with 0.25% Triton X100/PBS.



Flow cytometric analysis of A549 cells with UQCRFS1 antibody at 1/100 dilution (yellow) compared with an unlabelled control (cells without incubation with primary antibody; purple).Alexa Fluor 488-conjugated goat anti-rabbit IgG was used as the secondary antibody.

## Background

---

Cytochrome b-c1 complex subunit Rieske, mitochondrial: Component of the mitochondrial ubiquinol-cytochrome c reductase complex dimer (complex III dimer), which is a respiratory chain that generates an electrochemical potential coupled to ATP synthesis. Incorporation of UQCRFS1 is the penultimate step in complex III assembly.

## References

---

---

Note: This product is for in vitro research use only