

Cdc34 Polyclonal Antibody

Catalog No: #41598

Package Size: #41598-1 50ul #41598-2 100ul

Orders: order@signalwayantibody.comSupport: tech@signalwayantibody.com

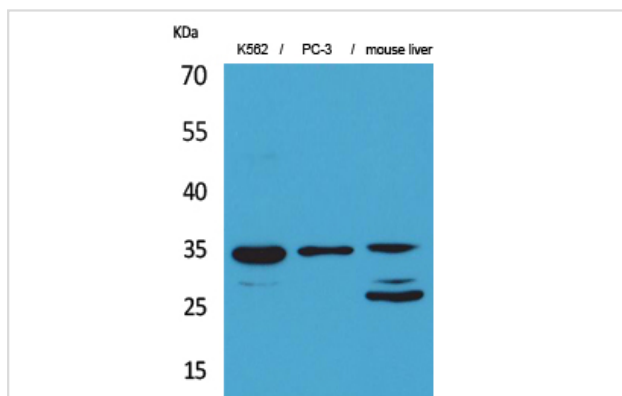
Description

| | |
|-----------------------|--|
| Product Name | Cdc34 Polyclonal Antibody |
| Host Species | Rabbit |
| Clonality | Polyclonal |
| Purification | The antibody was affinity-purified from rabbit antiserum by affinity-chromatography using epitope-specific immunogen. |
| Applications | WB |
| Species Reactivity | Hu Ms Rt |
| Specificity | Cdc34 Polyclonal Antibody detects endogenous levels of Cdc34 protein. |
| Immunogen Type | peptide |
| Immunogen Description | Synthesized peptide derived from the Internal region of human Cdc34. |
| Target Name | Cdc34 |
| Other Names | CDC34; UBCH3; UBE2R1; Ubiquitin-conjugating enzyme E2 R1; Ubiquitin-conjugating enzyme E2-32 kDa complementing; Ubiquitin-conjugating enzyme E2-CDC34; Ubiquitin-protein ligase R1 |
| Accession No. | Swiss-Prot: P49427NCBI Gene ID: 997 |
| Uniprot | P49427 |
| GeneID | 997; |
| SDS-PAGE MW | 34kd |
| Concentration | 1mg/ml |
| Formulation | Liquid in PBS containing 50% glycerol, 0.5% BSA and 0.02% sodium azide. |
| Storage | Store at -20°C/1 year |

Application Details

Western Blot: 1/500 - 1/2000.

Images



Western Blot analysis of K562 PC-3 mouse liver cells using Cdc34 Polyclonal Antibody

Note: This product is for in vitro research use only