

GEF H1 Rabbit mAb

Catalog No: #49905

Package Size: #49905-1 50ul #49905-2 100ul

Orders: order@signalwayantibody.com

Support: tech@signalwayantibody.com

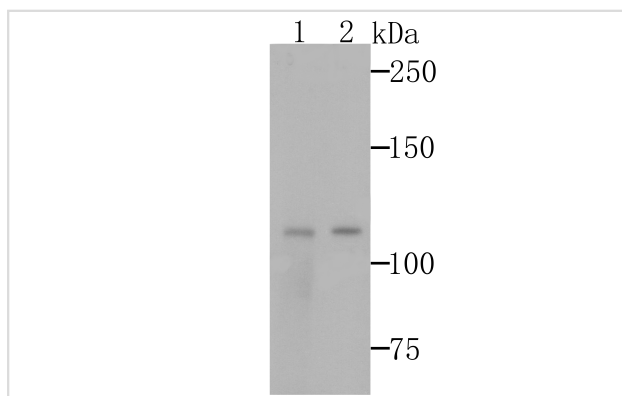
Description

Product Name	GEF H1 Rabbit mAb
Host Species	Recombinant Rabbit
Clonality	Monoclonal antibody
Clone No.	JG36-46
Purification	ProA affinity purified
Applications	WB,ICC,IF,IHC,FC
Species Reactivity	Hu, Ms, Rt
Immunogen Description	Recombinant protein corresponding to C-terminal human GEF H1.
Other Names	AA408978 antibody ARHG2 antibody ARHG2_HUMAN antibody ARHGEF 2 antibody ARHGEF-2 antibody ARHGEF2 antibody GEF antibody GEF H1 antibody GEF-H1 antibody GEFH1 antibody Guanine nucleotide exchange factor H1 antibody KIAA0651 antibody Lbc1 antibody Lfc antibody LFP40 antibody MGC95068 antibody Microtubule-regulated Rho-GEF antibody mKIAA0651 antibody P40 antibody Proliferating cell nucleolar antigen p40 antibody Protein GEF-H1 antibody Rho guanine nucleotide exchange factor 2 antibody rho/rac guanine nucleotide exchange factor (GEF) 2 antibody rho/rac guanine nucleotide exchange factor 2 antibody rho/rac guanine nucleotide exchange factor antibody
Accession No.	Swiss-Prot#:Q92974
Uniprot	Q92974
GeneID	9181;
Calculated MW	111 kDa
Formulation	1*TBS (pH7.4), 1%BSA, 40%Glycerol. Preservative: 0.05% Sodium Azide.
Storage	Store at -20°C

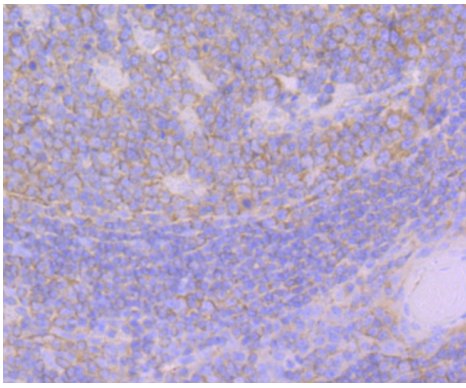
Application Details

WB: 1:500 IHC: 1:50-1:200 ICC: 1:50-1:200FC: 1:50-1:100

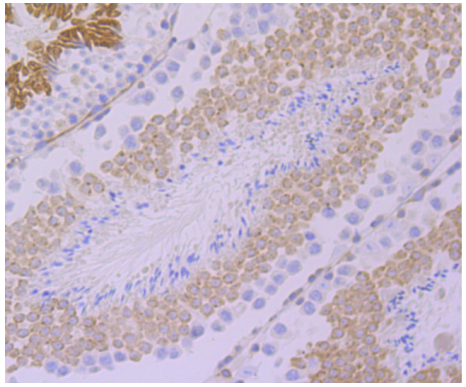
Images



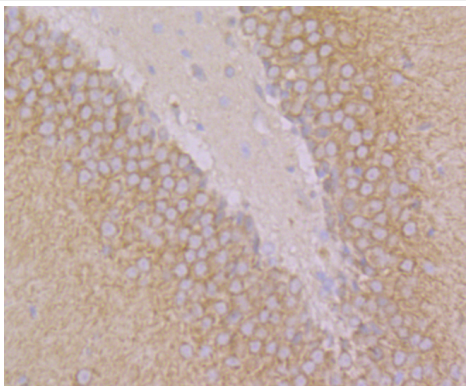
Western blot analysis of GEF H1 on 293T and A431 cells lysates using anti-GEF H1 antibody at 1/500 dilution.



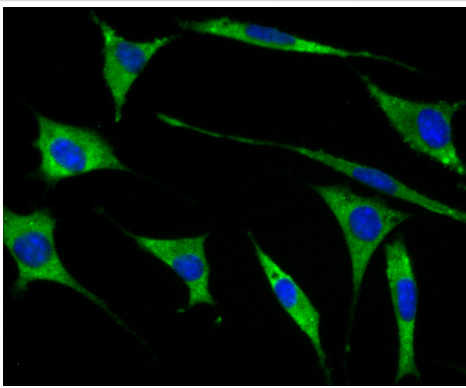
Immunohistochemical analysis of paraffin-embedded human tonsil tissue using anti-GEF H1 antibody. Counter stained with hematoxylin.



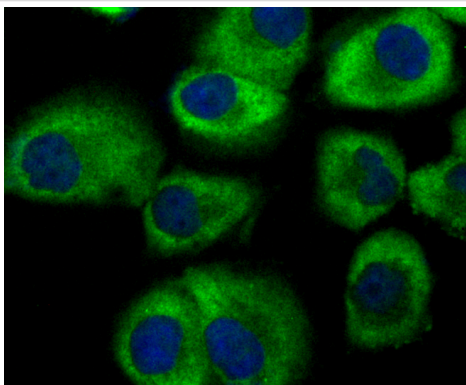
Immunohistochemical analysis of paraffin-embedded mouse testis tissue using anti-GEF H1 antibody. Counter stained with hematoxylin.



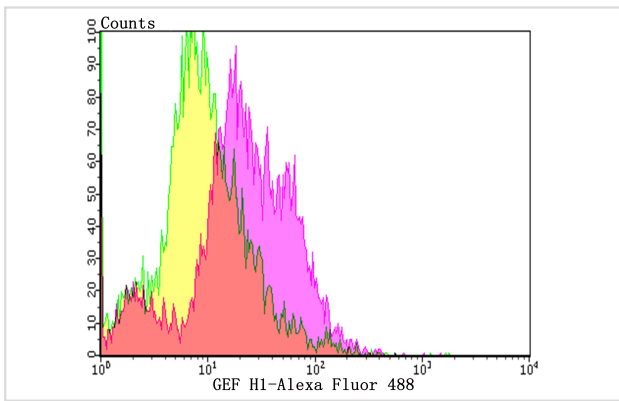
Immunohistochemical analysis of paraffin-embedded rat brain tissue using anti-GEF H1 antibody. Counter stained with hematoxylin.



ICC staining GEF H1 in SH-SY-5Y cells (green). The nuclear counter stain is DAPI (blue). Cells were fixed in paraformaldehyde, permeabilised with 0.25% Triton X100/PBS.



ICC staining GEF H1 in HUVEC cells (green). The nuclear counter stain is DAPI (blue). Cells were fixed in paraformaldehyde, permeabilised with 0.25% Triton X100/PBS.



Flow cytometric analysis of HL-60 cells with GEF H1 antibody at 1/100 dilution (yellow) compared with an unlabelled control (cells without incubation with primary antibody; purple). Alexa Fluor 488-conjugated goat anti-rabbit IgG was used as the secondary antibody.

Background

Activates Rho-GTPases by promoting the exchange of GDP for GTP. May be involved in epithelial barrier permeability, cell motility and polarization, dendritic spine morphology, antigen presentation, leukemic cell differentiation, cell cycle regulation, innate immune response, and cancer. May stimulate instead the cortical activity of Rac. Inactive toward CDC42, TC10, or Ras-GTPases. Forms an intracellular sensing system along with NOD1 for the detection of microbial effectors during cell invasion by pathogens. Required for RHOA and RIP2 dependent NF-kappaB signaling pathways activation upon *S.flexneri* cell invasion. Involved not only in sensing peptidoglycan (PGN)-derived muropeptides through NOD1 that is independent of its GEF activity, but also in the activation of NF-kappaB by *Shigella* effector proteins (IpgB2 and OspB) which requires its GEF activity and the activation of RhoA.

References

Note: This product is for in vitro research use only