

Cullin 2 Rabbit mAb

Catalog No: #49917



Package Size: #49917-1 50ul #49917-2 100ul

Orders: [order@signalwayantibody.com](mailto:order@signalwayantibody.com)  
Support: [tech@signalwayantibody.com](mailto:tech@signalwayantibody.com)

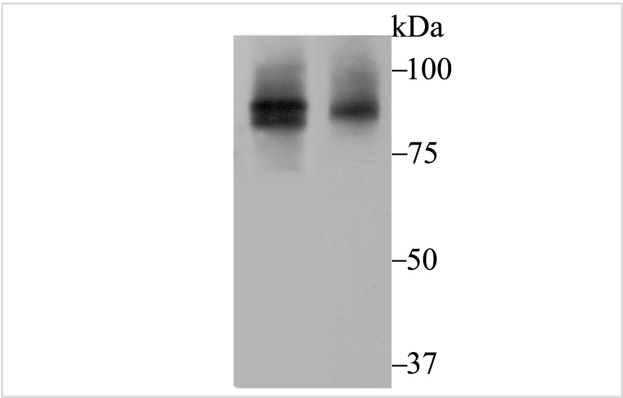
Description

Product Name	Cullin 2 Rabbit mAb
Host Species	Recombinant Rabbit
Clonality	Monoclonal antibody
Clone No.	JG72-31
Purification	ProA affinity purified
Applications	WB,IHC,IP
Species Reactivity	Hu, Ms, Rt
Other Names	Cul2 antibody CUL 2 antibody CUL-2 antibody CUL2 antibody CUL2_HUMAN antibody cullin 2 antibody cullin homolog 2 antibody Cullin-2 antibody MGC131970 antibody
Accession No.	Swiss-Prot#:Q13617
Uniprot	Q13617
GeneID	8453;
Calculated MW	89 kDa
Formulation	1*TBS (pH7.4), 1%BSA, 40%Glycerol. Preservative: 0.05% Sodium Azide.
Storage	Store at -20°C

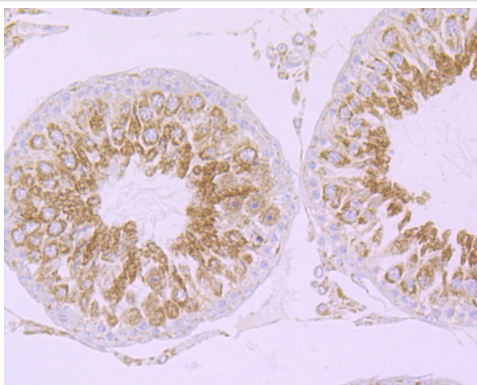
Application Details

WB: 1:500-1:2,000 IHC: 1:50-1:200IP: 1:10-1:50

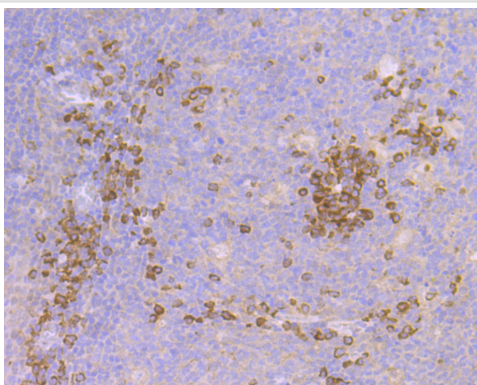
Images



Western blot analysis of Cullin 2 on PC-3M and K562 cell lysates using anti-Cullin 2 antibody at 1/1,000 dilution.



Immunohistochemical analysis of paraffin-embedded rat testis tissue using anti-Cullin 2 antibody. Counter stained with hematoxylin.



Immunohistochemical analysis of paraffin-embedded human tonsil tissue using anti-Cullin 2 antibody. Counter stained with hematoxylin.

## Background

Cullin proteins comprise a distinct family of mediators that participate in the selective targeting of proteins for ubiquitin (Ub)-mediated proteolysis. CUL-1, which is the mammalian homolog of yeast Cdc53, is an integral component of the E3 ubiquitin ligase complex designated SCF. The SCF (Skp1/CUL-1/F-box protein complex) consists of Skp1 associating with both CUL-1 and an F-box protein, such as Skp2, which determines the substrate specificity of the complex. CUL-1-mediated ubiquitination results in the degradation of cell cycle proteins cyclin D, p21 and cyclin E. Another cullin, CUL-3, facilitates the degradation of cyclin E independent of SCF activity, while CUL-2 associates with the tumor suppressing protein VHL and elongin B to form VBC complexes, which structurally resemble the SCF ligase. Proteolysis also occurs by way of CUL-4 associating with Nedd-8, a ubiquitin-like protein, where it too functions as an active component of a multifunctional E3 complex.

## References

Note: This product is for in vitro research use only