

SP-A Polyclonal Antibody

Catalog No: #41600



Package Size: #41600-1 50ul #41600-2 100ul

Orders: order@signalwayantibody.comSupport: tech@signalwayantibody.com

Description

Product Name	SP-A Polyclonal Antibody
Host Species	Rabbit
Clonality	Polyclonal
Purification	The antibody was affinity-purified from rabbit antiserum by affinity-chromatography using epitope-specific immunogen.
Applications	WB ELISA
Species Reactivity	Hu Ms Rt
Specificity	SP-A Polyclonal Antibody detects endogenous levels of SP-A protein.
Immunogen Type	peptide
Immunogen Description	Synthesized peptide derived from the Internal region of human SP-A.
Target Name	SP-A
Other Names	SFTPA2; COLEC5; PSAP; SFTP1; SFTPA; SFTPA2B; Pulmonary surfactant-associated protein A2; PSP-A; PSPA; SP-A; SP-A2; 35 kDa pulmonary surfactant-associated protein; Alveolar proteinosis protein; Collectin-5; SFTPA1; COLEC4; PSAP;
Accession No.	Swiss-Prot: Q8IWL1NCBI Gene ID: 729238
Uniprot	Q8IWL1
GeneID	729238;
SDS-PAGE MW	34kd
Concentration	1mg/ml
Formulation	Liquid in PBS containing 50% glycerol, 0.5% BSA and 0.02% sodium azide.
Storage	Store at -20°C/1 year

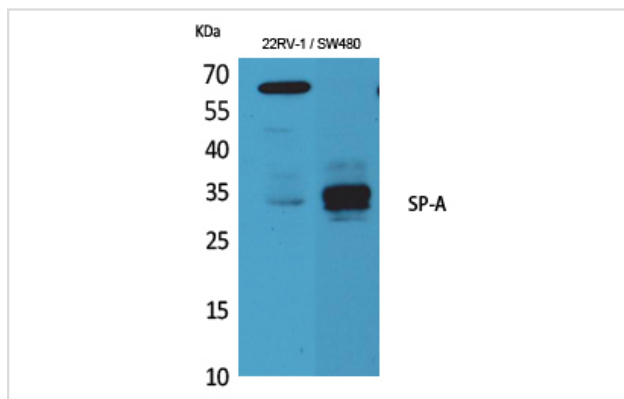
Application Details

Western Blot: 1/500 - 1/2000.

ELISA: 1/20000.

Not yet tested in other applications.

Images



Western Blot analysis of K562 mouse lung cells using SP-A Polyclonal Antibody

Note: This product is for in vitro research use only