

# SENP1 Rabbit mAb

Catalog No: #49923

Package Size: #49923-1 50ul #49923-2 100ul

Orders: [order@signalwayantibody.com](mailto:order@signalwayantibody.com)Support: [tech@signalwayantibody.com](mailto:tech@signalwayantibody.com)

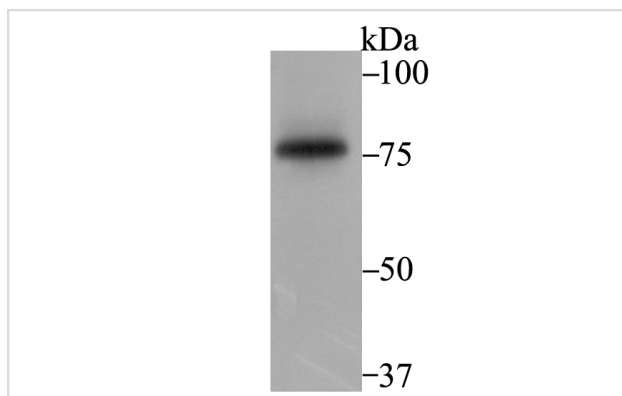
## Description

Product Name	SENP1 Rabbit mAb
Host Species	Recombinant Rabbit
Clonality	Monoclonal antibody
Clone No.	JG37-79
Purification	ProA affinity purified
Applications	WB,ICC,IF,IHC,FC
Species Reactivity	Hu
Immunogen Description	Recombinant protein within human SENP1 aa 300-500.
Other Names	SENP 1 antibody    SENP1 antibody    SENP1_HUMAN antibody    Sentrin specific protease 1 antibody Sentrin-specific protease 1 antibody    Sentrin/SUMO specific protease 1 antibody    Sentrin/SUMO specific protease antibody    Sentrin/SUMO specific protease SENP 1 antibody    Sentrin/SUMO specific protease SENP1 antibody    Sentrin/SUMO-specific protease SENP1 antibody    SUMO1/sentrin specific peptidase 1 antibody    SUMO1/sentrin specific protease 1 antibody    SuPr 2 antibody    SuPr2 antibody
Accession No.	Swiss-Prot#:Q9P0U3
Uniprot	Q9P0U3
GeneID	29843;
Calculated MW	73 kDa
Formulation	1*TBS (pH7.4), 1%BSA, 40%Glycerol. Preservative: 0.05% Sodium Azide.
Storage	Store at -20°C

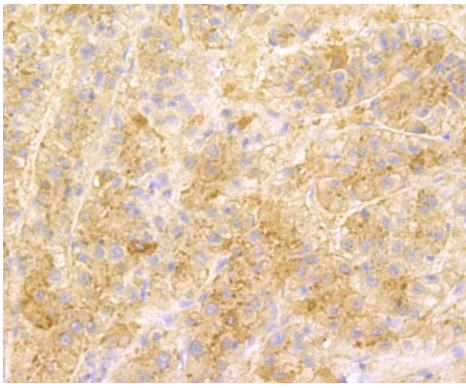
## Application Details

WB: 1:500-1:2,000 IHC: 1:50-1:200 ICC: 1:50-1:200 FC: 1:50-1:100

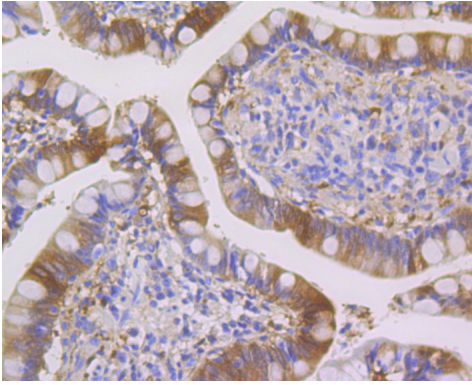
## Images



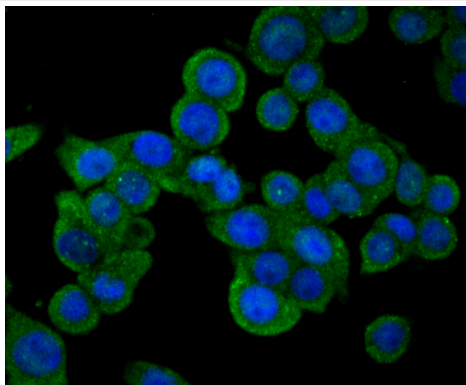
Western blot analysis of SENP1 on K562 cell using anti-SENP1 antibody at 1/1,000 dilution.



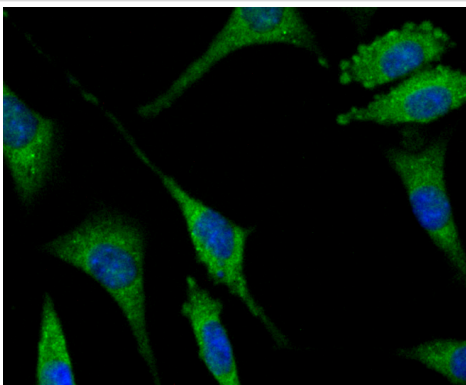
Immunohistochemical analysis of paraffin-embedded human liver tissue using anti-SENP1 antibody. Counter stained with hematoxylin.



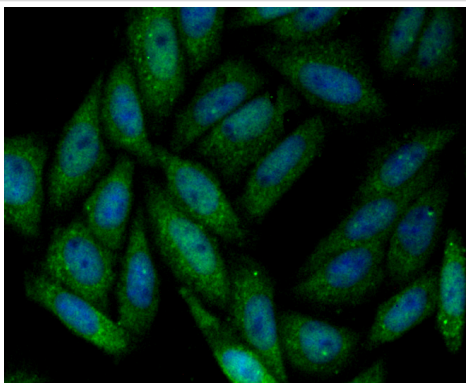
Immunohistochemical analysis of paraffin-embedded human small Intestine tissue using anti-SENP1 antibody. Counter stained with hematoxylin.



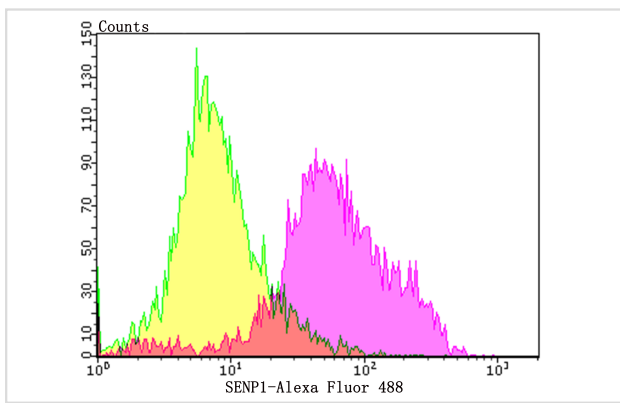
ICC staining SENP1 in LOVO cells (green). The nuclear counter stain is DAPI (blue). Cells were fixed in paraformaldehyde, permeabilised with 0.25% Triton X100/PBS.



ICC staining SENP1 in SH-SY-5Y cells (green). The nuclear counter stain is DAPI (blue). Cells were fixed in paraformaldehyde, permeabilised with 0.25% Triton X100/PBS.



ICC staining SENP1 in SiHa cells (green). The nuclear counter stain is DAPI (blue). Cells were fixed in paraformaldehyde, permeabilised with 0.25% Triton X100/PBS.



Flow cytometric analysis of Daudi cells with SENP1 antibody at 1/100 dilution (purple) compared with an unlabelled control (cells without incubation with primary antibody; yellow). Alexa Fluor 488-conjugated goat anti-rabbit IgG was used as the secondary antibody.

## Background

Protease that catalyzes two essential functions in the SUMO pathway. The first is the hydrolysis of an alpha-linked peptide bond at the C-terminal end of the small ubiquitin-like modifier (SUMO) propeptides, SUMO1, SUMO2 and SUMO3 leading to the mature form of the proteins. The second is the deconjugation of SUMO1, SUMO2 and SUMO3 from targeted proteins, by cleaving an epsilon-linked peptide bond between the C-terminal glycine of the mature SUMO and the lysine epsilon-amino group of the target protein. Deconjugates SUMO1 from HIPK2. Deconjugates SUMO1 from HDAC1 and BHLHE40/DEC1, which decreases its transcriptional repression activity. Deconjugates SUMO1 from CLOCK, which decreases its transcriptional activation activity. Deconjugates SUMO2 from MTA1. Desumoylates CCAR2 which decreases its interaction with SIRT1. Deconjugates SUMO1 from GPS2.

## References

Note: This product is for in vitro research use only