

## CD133 Polyclonal Antibody

Catalog No: #41601

Package Size: #41601-1 50ul #41601-2 100ul

Orders: order@signalwayantibody.com

Support: tech@signalwayantibody.com

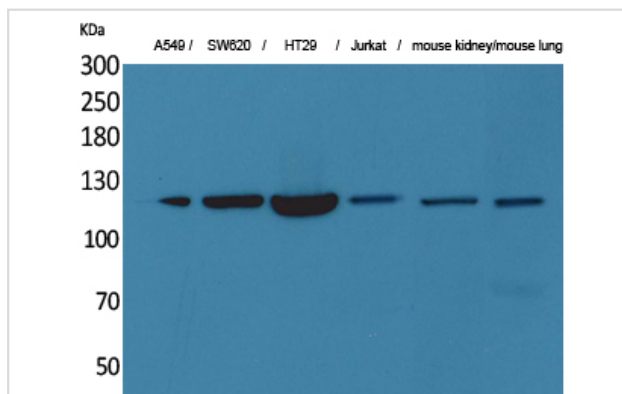
## Description

Product Name	CD133 Polyclonal Antibody
Host Species	Rabbit
Clonality	Polyclonal
Purification	The antibody was affinity-purified from rabbit antiserum by affinity-chromatography using epitope-specific immunogen.
Applications	WB;IHC;IF;ELISA
Species Reactivity	Hu Ms
Specificity	CD133 Polyclonal Antibody detects endogenous levels of CD133 protein.
Immunogen Description	Synthesized peptide derived from the N-terminal region of human CD133.
Target Name	CD133
Other Names	PROM1; Prominin-1; Antigen AC133; Prominin-like protein 1; CD133
Accession No.	Swiss-Prot: O43490NCBI Gene ID: 8842
Uniprot	O43490
GeneID	8842;
SDS-PAGE MW	100kd
Concentration	1mg/ml
Formulation	Liquid in PBS containing 50% glycerol, 0.5% BSA and 0.02% sodium azide.
Storage	Store at -20°C/1 year

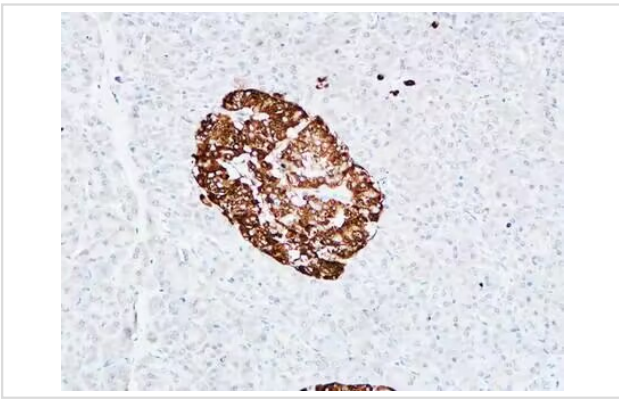
## Application Details

WB 1:500 - 1:2000. IHC-p: 1:100-300 ELISA: 1:20000. IF 1:100-300

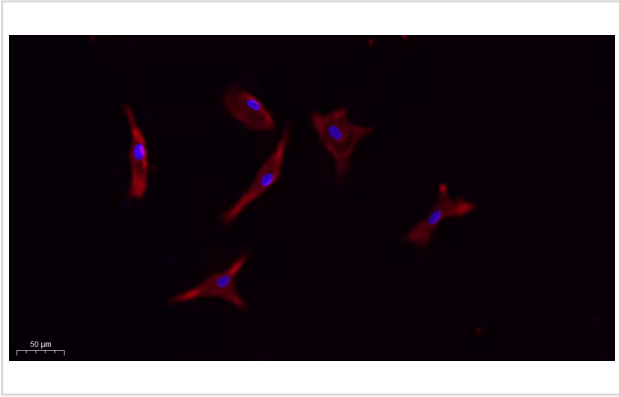
## Images



Western Blot analysis of A549 SW620 HT29 Jurkat mouse kidney mouse lung cells using CD133 Polyclonal Antibody



Immunohistochemical analysis of paraffin-embedded Human pancreas.



Immunofluorescence analysis of A549.

---

Note: This product is for in vitro research use only