

STUB1 Rabbit mAb

Catalog No: #49933

Package Size: #49933-1 50ul #49933-2 100ul

Orders: order@signalwayantibody.com

Support: tech@signalwayantibody.com

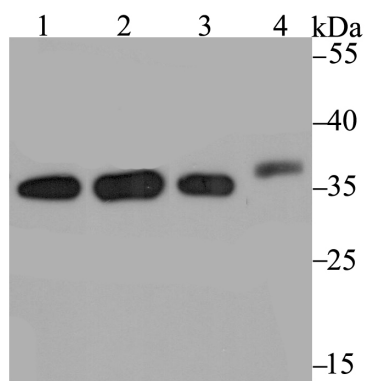
Description

Product Name	STUB1 Rabbit mAb
Host Species	Recombinant Rabbit
Clonality	Monoclonal antibody
Clone No.	JG38-22
Purification	ProA affinity purified
Applications	WB,ICC,IF,IHC,IP,FC
Species Reactivity	Hu, Ms, Rt
Immunogen Description	Recombinant protein within human STUB1 aa 1-200.
Other Names	Antigen NY CO 7 antibody Antigen NY-CO-7 antibody C terminus of Hsp70-interacting protein antibody Carboxy terminus of Hsp70 interacting protein antibody Carboxy terminus of Hsp70-interacting protein antibody Carboxy terminus of Hsp70p interacting protein antibody CHIP antibody CHIP_HUMAN antibody CLL associated antigen KW 8 antibody CLL-associated antigen KW-8 antibody E3 ubiquitin protein ligase CHIP antibody E3 ubiquitin-protein ligase CHIP antibody Heat shock protein A binding protein 2 (c terminal) antibody HSPABP2 antibody NY CO 7 antibody PP1131 antibody SDCCAG7 antibody Serologically defined colon cancer antigen 7 antibody STIP1 homology and U Box containing protein 1 antibody STIP1 homology and U box containing protein 1 E3 ubiquitin protein ligase antibody STIP1 homology and U box-containing protein 1 antibody STUB 1 antibody STUB1 antibody UBOX 1 antibody UBOX1 antibody
Accession No.	Swiss-Prot#:Q9UNE7
Uniprot	Q9UNE7
GeneID	10273;
Calculated MW	35 kDa
Formulation	1*TBS (pH7.4), 1%BSA, 40%Glycerol. Preservative: 0.05% Sodium Azide.
Storage	Store at -20°C

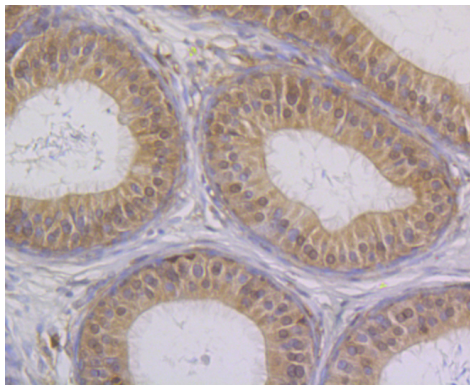
Application Details

WB: 1:1,000-1:2,000 IHC: 1:50-1:200 ICC: 1:50-1:200IP: 1:10-1:50FC: 1:50-1:100

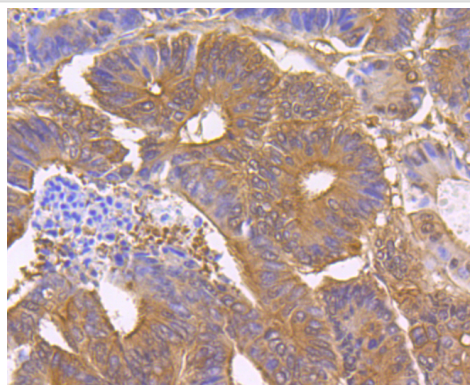
Images



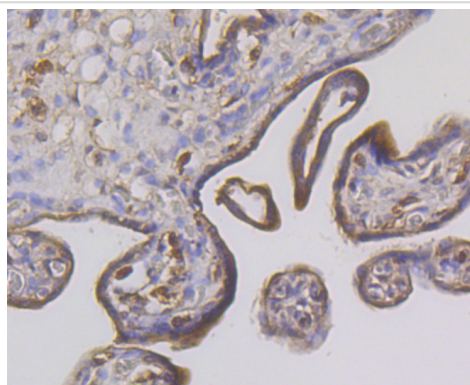
Western blot analysis of STUB1 on different lysates using anti-STUB1 antibody at 1/2,000 dilution. Positive control: Lane 1: 293 Lane 2: MCF-7 Lane 3: SK-Br-3 Lane 4: Mouse kidney



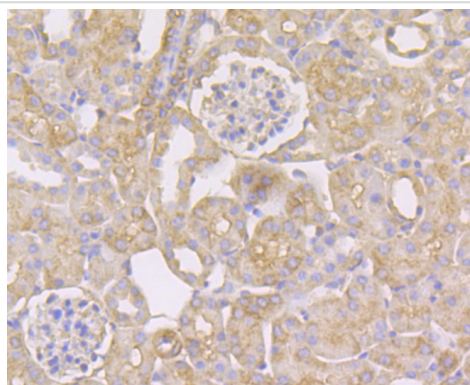
Immunohistochemical analysis of paraffin-embedded rat epididymis tissue using anti-STUB1 antibody. Counter stained with hematoxylin.



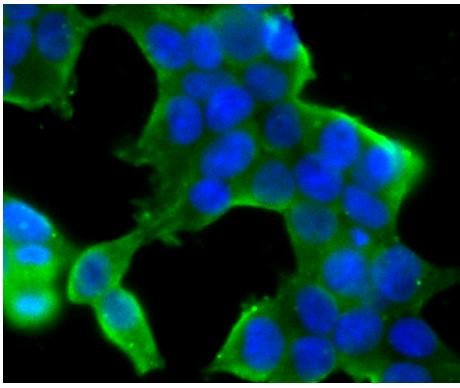
Immunohistochemical analysis of paraffin-embedded human colon cancer tissue using anti-STUB1 antibody. Counter stained with hematoxylin.



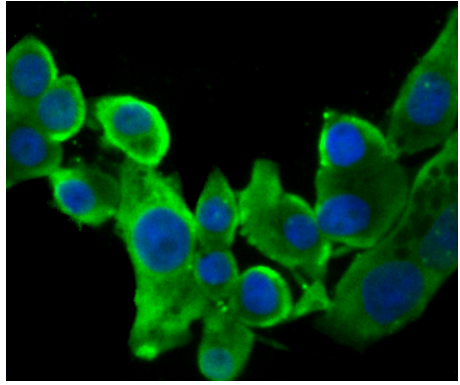
Immunohistochemical analysis of paraffin-embedded human placenta tissue using anti-STUB1 antibody. Counter stained with hematoxylin.



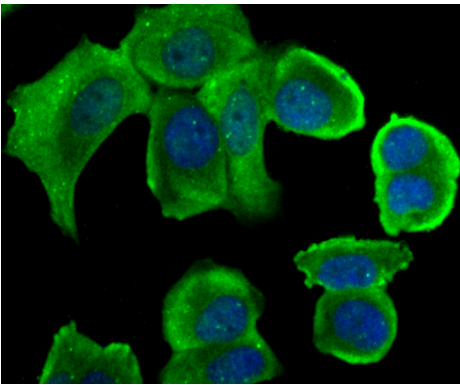
Immunohistochemical analysis of paraffin-embedded mouse kidney tissue using anti-STUB1 antibody. Counter stained with hematoxylin.



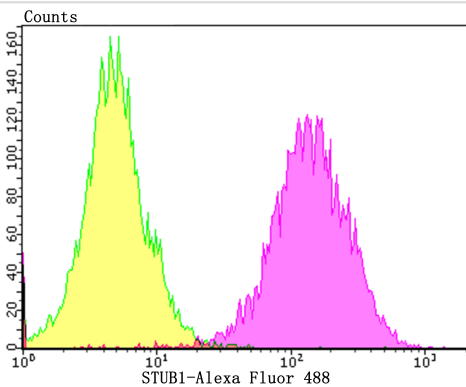
ICC staining STUB1 in 293T cells (green). The nuclear counter stain is DAPI (blue). Cells were fixed in paraformaldehyde, permeabilised with 0.25% Triton X100/PBS.



ICC staining STUB1 in LOVO cells (green). The nuclear counter stain is DAPI (blue). Cells were fixed in paraformaldehyde, permeabilised with 0.25% Triton X100/PBS.



ICC staining STUB1 in MCF-7 cells (green). The nuclear counter stain is DAPI (blue). Cells were fixed in paraformaldehyde, permeabilised with 0.25% Triton X100/PBS.



Flow cytometric analysis of SH-SY-5Y cells with STUB1 antibody at 1/100 dilution (purple) compared with an unlabelled control (cells without incubation with primary antibody; yellow). Alexa Fluor 488-conjugated goat anti-rabbit IgG was used as the secondary antibody.

Background

CHIP (carboxy terminus of HSP 70-interacting protein), also designated STIP1 homology and U-box containing protein 1, HSPABP2, NY-CO-7, SDCCAG7 and STUB1, is a cytoplasmic E3 ubiquitin ligase that influences protein ubiquitylation. CHIP interacts with Smad1/Smad4 and blocks BMP signaling through the ubiquitin-mediated degradation of Smad proteins. CHIP controls both association of Hsp70/Hsp90 chaperones with ErbB2 and down-regulation of ErbB2 induced by inhibitors of Hsp90. A 1.3-kb transcript is most abundant in striated muscle (heart and skeletal muscle), with lower expression in pancreas and brain.

References

Note: This product is for in vitro research use only