

## p150 CAF1 Rabbit mAb

Catalog No: #49950

Package Size: #49950-1 50ul #49950-2 100ul

Orders: order@signalwayantibody.com

Support: tech@signalwayantibody.com

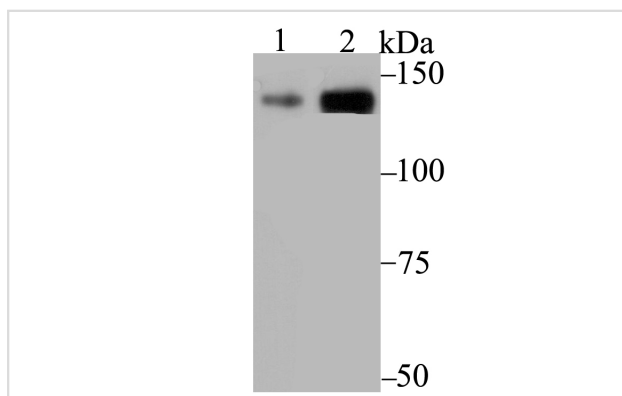
## Description

Product Name	p150 CAF1 Rabbit mAb
Host Species	Recombinant Rabbit
Clonality	Monoclonal antibody
Clone No.	JG38-98
Purification	ProA affinity purified
Applications	WB,ICC,IF,IP,IHC,FC
Species Reactivity	Hu
Immunogen Description	Recombinant protein within human p150 CAF1 aa 100-300.
Other Names	CAF 1 antibody CAF 1 subunit A antibody CAF antibody CAF I 150 kDa subunit antibody CAF I p150 antibody CAF-1 subunit A antibody CAF-I 150 kDa subunit antibody CAF-I p150 antibody CAF1 antibody CAF1A_HUMAN antibody CAF1B antibody CAF1P150 antibody CHAF1A antibody Chromatin assembly factor 1 subunit A antibody Chromatin Assembly Factor 1 Subunit A p150 antibody Chromatin assembly factor I (150 kDa) antibody Chromatin assembly factor I 150 kDa antibody Chromatin assembly factor I p150 subunit antibody DCAF1 antibody hp150 antibody MGC71229 antibody P150 antibody
Accession No.	Swiss-Prot#:Q13111
Uniprot	Q13111
GeneID	10036;
Calculated MW	107 kDa (Predicted band size)
Formulation	1*TBS (pH7.4), 1%BSA, 40%Glycerol. Preservative: 0.05% Sodium Azide.
Storage	Store at -20°C

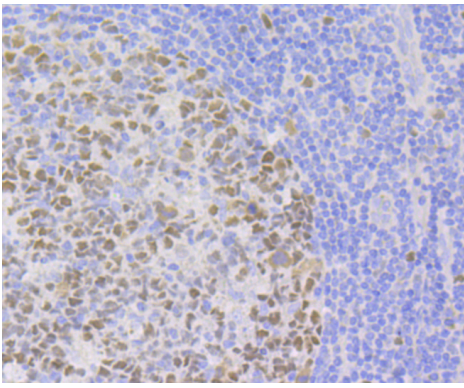
## Application Details

WB: 1:500-1:2,000 IHC: 1:50-1:200 ICC/IF: 1:50-1:200IP: 1:10-1:50FC: 1:50-1:100

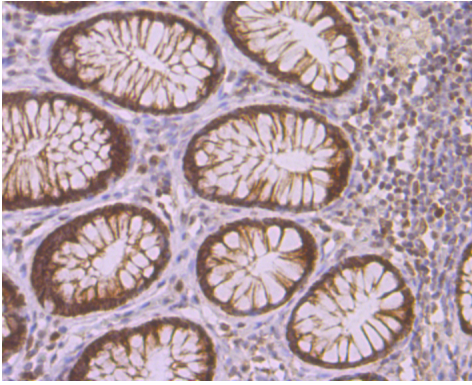
## Images



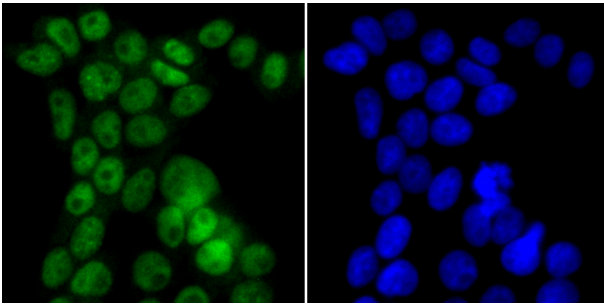
Western blot analysis of p150 CAF1 on K562 (1) and A431 (2) cell lysate using anti-p150 CAF1 antibody at 1/1,000 dilution.



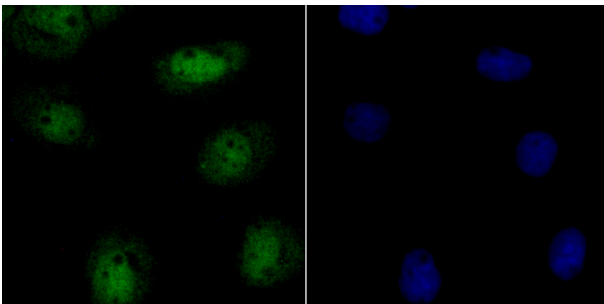
Immunohistochemical analysis of paraffin-embedded human tonsil tissue using anti-p150 CAF1 antibody. Counter stained with hematoxylin.



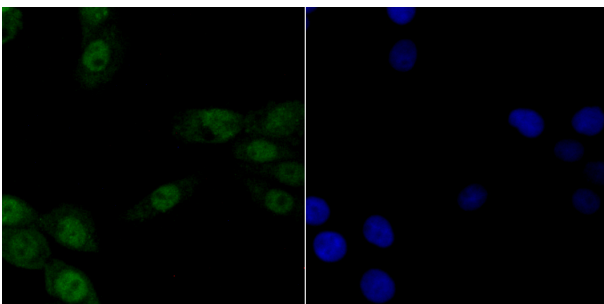
Immunohistochemical analysis of paraffin-embedded human colon tissue using anti-p150 CAF1 antibody. Counter stained with hematoxylin.



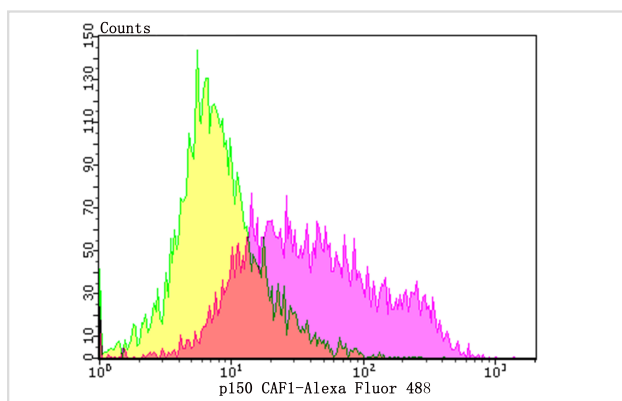
ICC staining p150 CAF1 in 293T cells (green). The nuclear counter stain is DAPI (blue). Cells were fixed in paraformaldehyde, permeabilised with 0.25% Triton X100/PBS.



ICC staining p150 CAF1 in A431 cells (green). The nuclear counter stain is DAPI (blue). Cells were fixed in paraformaldehyde, permeabilised with 0.25% Triton X100/PBS.



ICC staining p150 CAF1 in LOVO cells (green). The nuclear counter stain is DAPI (blue). Cells were fixed in paraformaldehyde, permeabilised with 0.25% Triton X100/PBS.



Flow cytometric analysis of Daudi cells with p150 CAF1 antibody at 1/100 dilution (purple) compared with an unlabelled control (cells without incubation with primary antibody; yellow). Alexa Fluor 488-conjugated goat anti-rabbit IgG was used as the secondary antibody.

## Background

Chromatin assembly factor-1 (CAF-1) is a multisubunit protein complex that comprises three polypeptide subunits known as p150, p60, and p48. CAF-1 is a nucleosome assembly factor that deposits newly synthesized and acetylated Histones H3/H4 into nascent chromatin during DNA replication. The p150 subunit of CAF-1 also supports the maintenance of heterochromatin, which requires the synthesis of both new histones and heterochromatin proteins and their orderly assembly during DNA replication. Heterochromatin is characterized as densely coiled chromatin that generally replicates late during S phase, has a low gene density, and contains large blocks of repetitive DNA that is relatively inaccessible to DNA-modifying reagents. In late S phase, p150 directly associates with heterochromatin associated proteins 1 (HP1 $\alpha$ , HP1 $\beta$  and HP1 $\gamma$ ). As cells prepare for mitosis, CAF-1 p150 and some HP1 progressively dissociate from heterochromatin, coinciding with the phosphorylation of histone H3. The HP1 proteins reassociate with chromatin at the end of mitosis, as histone H3 is dephosphorylated.

## References

Note: This product is for in vitro research use only