

FKBP52 Rabbit mAb

Catalog No: #49958

Package Size: #49958-1 50ul #49958-2 100ul

Orders: order@signalwayantibody.com

Support: tech@signalwayantibody.com

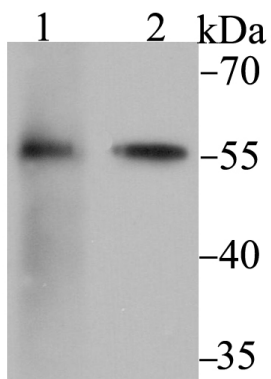
Description

| | |
|-----------------------|---|
| Product Name | FKBP52 Rabbit mAb |
| Host Species | Recombinant Rabbit |
| Clonality | Monoclonal antibody |
| Clone No. | JG96-30 |
| Purification | ProA affinity purified |
| Applications | WB,ICC,IHC,FC |
| Species Reactivity | Hu, Ms |
| Immunogen Description | Recombinant protein within human FKBP52 aa 1-200. |
| Other Names | 51 kDa FK506-binding protein antibody 52 kDa FK506 binding protein antibody 52 kDa FK506-binding protein antibody 52 kDa FKBP antibody 59 kDa immunophilin antibody FK506 binding protein 4 antibody FK506-binding protein 4 antibody FKBP 4 antibody FKBP 52 antibody FKBP 59 antibody FKBP-4 antibody FKBP-52 antibody FKBP4 antibody FKBP4_HUMAN antibody FKBP51 antibody FKBP52 protein antibody FKBP59 antibody HBI antibody Hsp 56 antibody HSP binding immunophilin antibody HSP-binding immunophilin antibody Hsp56 antibody Immunophilin FKBP52 antibody N-terminally processed antibody p52 antibody p59 antibody p59 protein antibody Peptidyl prolyl cis trans isomerase antibody Peptidyl-prolyl cis-trans isomerase FKBP4 antibody Peptidylprolyl cis trans isomerase antibody PPIase antibody PPIase FKBP4 antibody Rotamase antibody T cell FK506 binding protein 59kD antibody |
| Accession No. | Swiss-Prot#:Q02790 |
| Uniprot | Q02790 |
| GeneID | 2288; |
| Calculated MW | 52 kDa |
| Formulation | 1*TBS (pH7.4), 1%BSA, 40%Glycerol. Preservative: 0.05% Sodium Azide. |
| Storage | Store at -20°C |

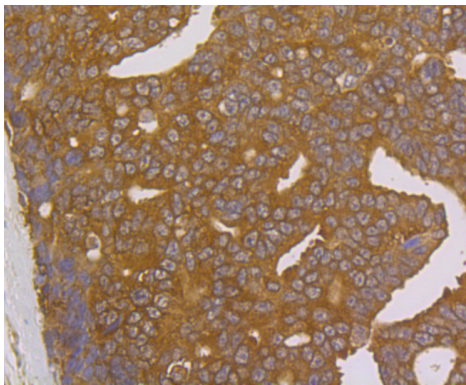
Application Details

WB: 1:1,000-1:2,000 IHC: 1:50-1:200 ICC: 1:50-1:200FC: 1:50-1:100

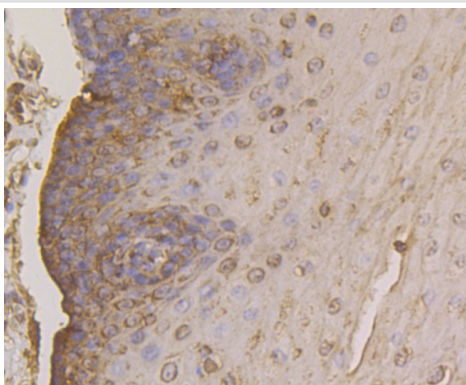
Images



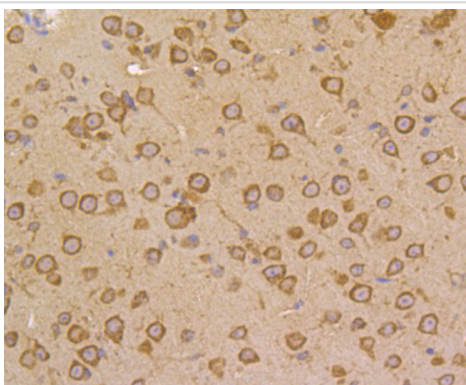
Western blot analysis of FKBP52 on 293 (1) and SK-Br-3 (2) cell lysate using anti-FKBP52 antibody at 1/2,000 dilution.



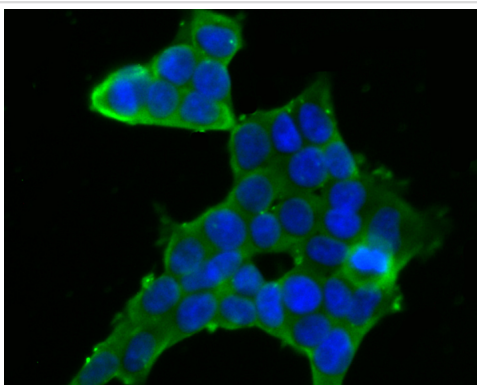
Immunohistochemical analysis of paraffin-embedded human prostate cancer tissue using anti-FKBP52 antibody. Counter stained with hematoxylin.



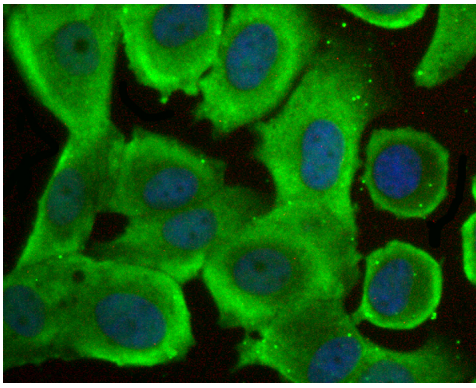
Immunohistochemical analysis of paraffin-embedded human esophagus tissue using anti-FKBP52 antibody. Counter stained with hematoxylin.



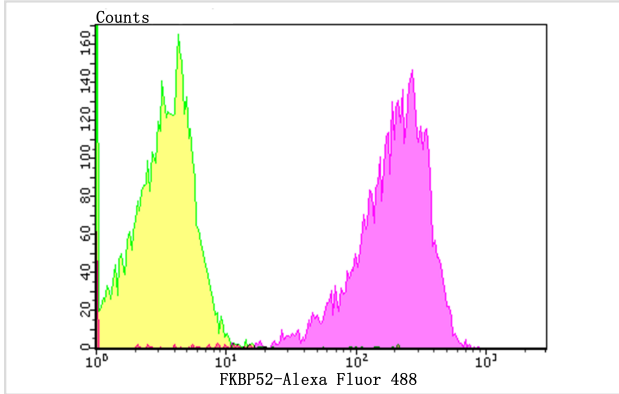
Immunohistochemical analysis of paraffin-embedded mouse brain tissue using anti-FKBP52 antibody. Counter stained with hematoxylin.



ICC staining FKBP52 in 293T cells (green). The nuclear counter stain is DAPI (blue). Cells were fixed in paraformaldehyde, permeabilised with 0.25% Triton X100/PBS.



ICC staining FKBP52 in MCF-7 cells (green). The nuclear counter stain is DAPI (blue). Cells were fixed in paraformaldehyde, permeabilised with 0.25% Triton X100/PBS.



Flow cytometric analysis of 293T cells with FKBP52 antibody at 1/100 dilution (purple) compared with an unlabelled control (cells without incubation with primary antibody; yellow). Alexa Fluor 488-conjugated goat anti-rabbit IgG was used as the secondary antibody.

Background

Immunophilin protein with PPIase and co-chaperone activities. Component of steroid receptors heterocomplexes through interaction with heat-shock protein 90 (HSP90). May play a role in the intracellular trafficking of heterooligomeric forms of steroid hormone receptors between cytoplasm and nuclear compartments. The isomerase activity controls neuronal growth cones via regulation of TRPC1 channel opening. Acts also as a regulator of microtubule dynamics by inhibiting MAPT/TAU ability to promote microtubule assembly. May have a protective role against oxidative stress in mitochondria.

References

Note: This product is for in vitro research use only