

## BANF1 Rabbit mAb

Catalog No: #49971

Package Size: #49971-1 50ul #49971-2 100ul

Orders: order@signalwayantibody.com

Support: tech@signalwayantibody.com

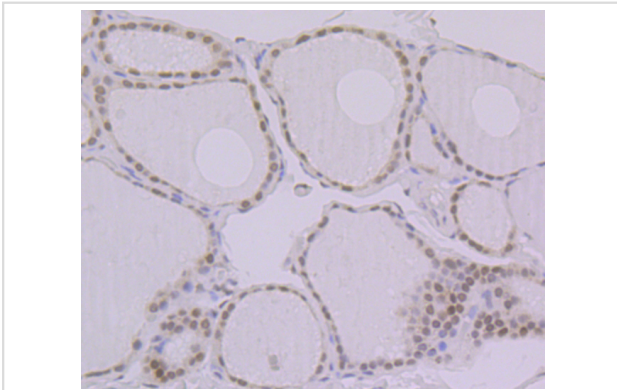
## Description

Product Name	BANF1 Rabbit mAb
Host Species	Recombinant Rabbit
Clonality	Monoclonal antibody
Clone No.	JG40-43
Purification	ProA affinity purified
Applications	WB,ICC,IHC,FC
Species Reactivity	Hu, Ms, Rt
Immunogen Description	Full length recombinant protein of human BANF1.
Other Names	BAF antibody BAF_HUMAN antibody BANF 1 antibody BANF1 antibody Barrier to autointegration factor 1 antibody Barrier to autointegration factor antibody Barrier-to-autointegration factor antibody BCRG 1 antibody BCRG1 antibody BCRP 1 antibody BCRP1 antibody Breakpoint cluster region protein 1 antibody D14S1460 antibody MGC111161 antibody NGPS antibody
Accession No.	Swiss-Prot#:O75531
Uniprot	O75531
GeneID	8815;
Calculated MW	10 kDa
Formulation	1*TBS (pH7.4), 1%BSA, 40%Glycerol. Preservative: 0.05% Sodium Azide.
Storage	Store at -20°C

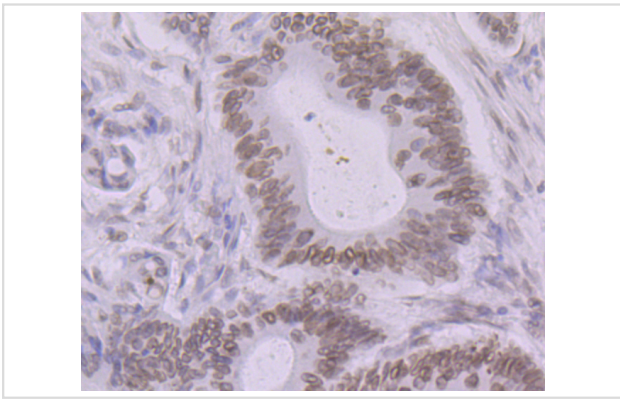
## Application Details

IHC: 1:50-1:200 ICC: 1:50-1:100 FC: 1:50-1:100

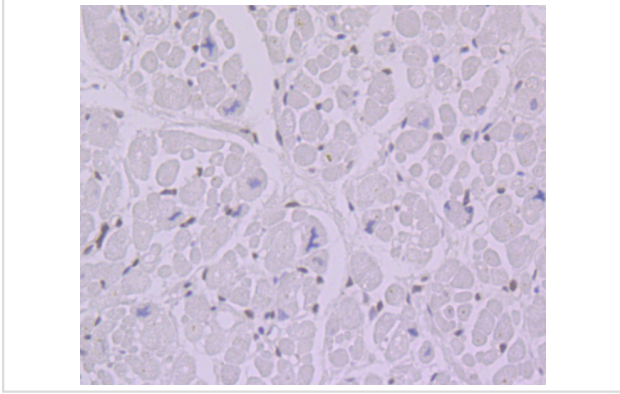
## Images



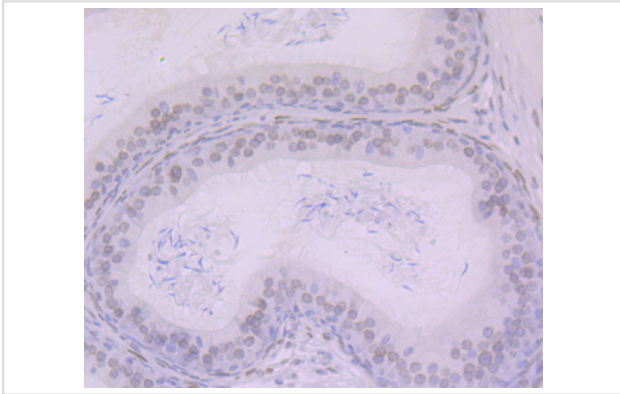
Immunohistochemical analysis of paraffin-embedded human thyroid gland tissue using anti-BANF1 antibody. Counter stained with hematoxylin.



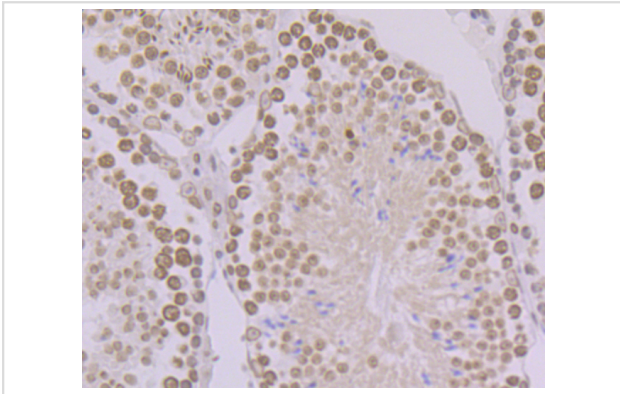
Immunohistochemical analysis of paraffin-embedded human colon cancer tissue using anti-BANF1 antibody. Counter stained with hematoxylin.



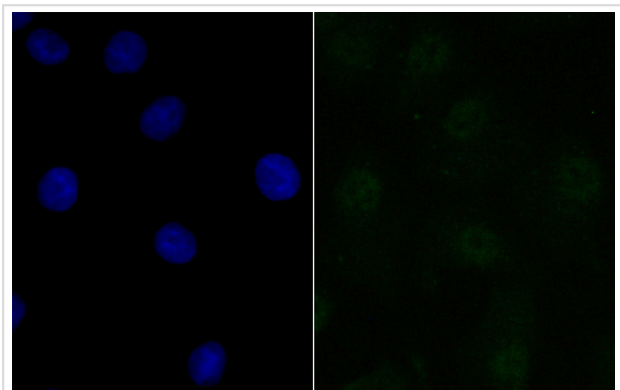
Immunohistochemical analysis of paraffin-embedded human heart tissue using anti-BANF1 antibody. Counter stained with hematoxylin.



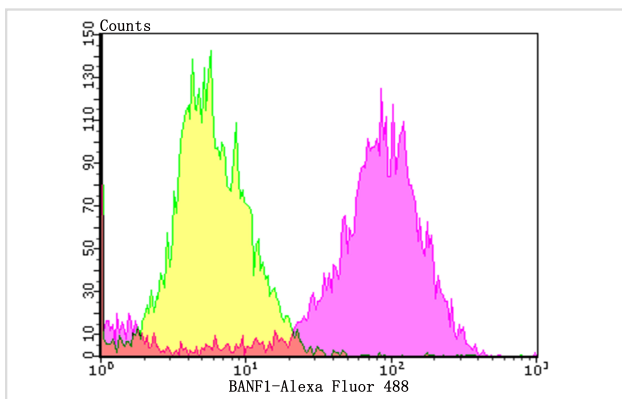
Immunohistochemical analysis of paraffin-embedded rat epididymis tissue using anti-BANF1 antibody. Counter stained with hematoxylin.



Immunohistochemical analysis of paraffin-embedded mouse testis tissue using anti-BANF1 antibody. Counter stained with hematoxylin.



ICC staining BANF1 in A549 cells (green). The nuclear counter stain is DAPI (blue). Cells were fixed in paraformaldehyde, permeabilised with 0.25% Triton X100/PBS.



Flow cytometric analysis of MCF-7 cells with BANF1 antibody at 1/100 dilution (purple) compared with an unlabelled control (cells without incubation with primary antibody; yellow). Alexa Fluor 488-conjugated goat anti-rabbit IgG was used as the secondary antibody.

## Background

Barrier-to-autointegration factor (BAF) binds non-specifically to double stranded DNA, possibly to play a role in tissue- or cell type-specific gene expression by interacting with different homeodomain transcription factors. BAF compresses chromatin structure and interacts with the LEM domain of nuclear proteins to play a crucial role in membrane recruitment and chromatin decondensation during nuclear assembly. Additionally, retroviruses like HIV-1 incorporate BAF from host cells into preintegration complexes (PICs) to prevent autointegration of retroviral DNA and thereby promote integration of retroviral DNA into the host chromosome.

## References

Note: This product is for in vitro research use only