

## CRP Polyclonal Antibody

Catalog No: #41605

Package Size: #41605-1 50ul #41605-2 100ul

Orders: [order@signalwayantibody.com](mailto:order@signalwayantibody.com)Support: [tech@signalwayantibody.com](mailto:tech@signalwayantibody.com)

## Description

Product Name	CRP Polyclonal Antibody
Host Species	Rabbit
Clonality	Polyclonal
Purification	The antibody was affinity-purified from rabbit antiserum by affinity-chromatography using epitope-specific immunogen.
Applications	WB ELISA
Species Reactivity	Hu Rt
Specificity	CRP Polyclonal Antibody detects endogenous levels of CRP protein.
Immunogen Type	peptide
Immunogen Description	Synthesized peptide derived from the Internal region of human CRP.
Target Name	CRP
Other Names	CRP; PTX1; C-reactive protein
Accession No.	Swiss-Prot: P02741NCBI Gene ID: 1401
Uniprot	P02741
GeneID	1401;
SDS-PAGE MW	25kd
Concentration	1mg/ml
Formulation	Liquid in PBS containing 50% glycerol, 0.5% BSA and 0.02% sodium azide.
Storage	Store at -20°C/1 year

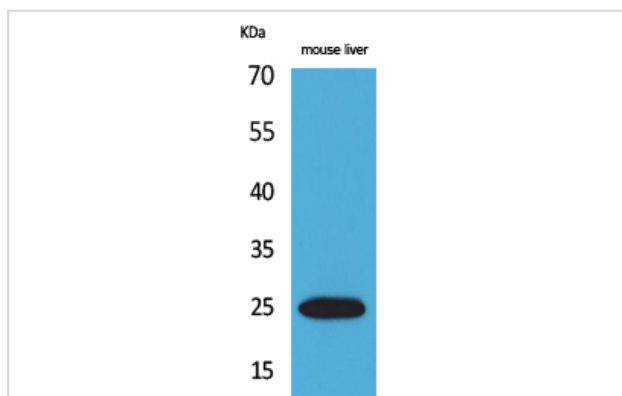
## Application Details

Western Blot: 1/500 - 1/2000.

ELISA: 1/20000.

Not yet tested in other applications.

## Images



Western Blot analysis of mouse liver cells using CRP Polyclonal Antibody

---

Note: This product is for in vitro research use only