

NXF1 Rabbit mAb

Catalog No: #49975

Package Size: #49975-1 50ul #49975-2 100ul

Orders: order@signalwayantibody.com

Support: tech@signalwayantibody.com

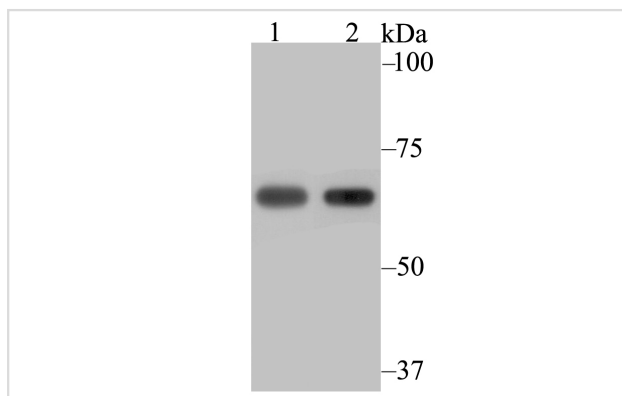
Description

Product Name	NXF1 Rabbit mAb
Host Species	Recombinant Rabbit
Clonality	Monoclonal antibody
Clone No.	JE40-63
Purification	ProA affinity purified
Applications	WB,ICC,IP
Species Reactivity	Hu
Immunogen Description	Recombinant protein within c-terminal human NXF1.
Other Names	DKFZp667O0311 antibody DmNXF1 antibody MEX67 antibody MEX67, yeast, homolog of antibody Mex67p antibody mRNA export factor TAP antibody Mvb1 antibody Nuclear RNA export factor 1 antibody Nuclear RNA export factor 1 homolog (S. cerevisiae) antibody nxf 1 antibody NXF1 antibody NXF1_HUMAN antibody Protein small bristles antibody Sbr antibody TAP antibody Tip associating protein antibody Tip-associated protein antibody Tip-associating protein antibody
Accession No.	Swiss-Prot#:Q9UBU9
Uniprot	Q9UBU9
GeneID	10482;
Calculated MW	70 kDa
Formulation	1*TBS (pH7.4), 1%BSA, 40%Glycerol. Preservative: 0.05% Sodium Azide.
Storage	Store at -20°C

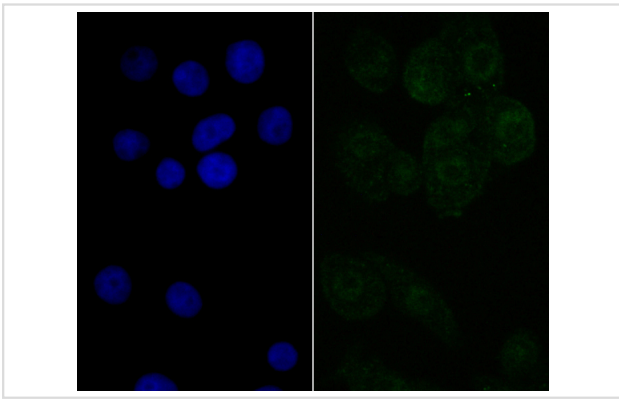
Application Details

WB: 1:500-1:2,000 ICC: 1:50-1:100IP: 1:10-1:50

Images



Western blot analysis of NXF1 on 293 (1) and SiHa (2) cell lysate using anti-NXF1 antibody at 1/2,000 dilution.



ICC staining NXF1 in LOVO cells (green). The nuclear counter stain is DAPI (blue). Cells were fixed in paraformaldehyde, permeabilised with 0.25% Triton X100/PBS.

Background

The constitutive transport element (CTE) of type D retroviruses serves as a signal of nuclear export for unspliced viral RNAs. TAP (tip-associating protein, also known as NXF1) mediates the export of CTE-containing simian type D retroviral RNAs through binding directly to the CTE. TAP is associated with a recognized mRNA export pathway and is a member of the multigene family of NXF proteins. NXF proteins belong to an evolutionarily conserved family of proteins, which are characterized by a leucine-rich-repeat domain (LRR) followed by a region known as the nuclear transport factor 2 (NTF2)-like domain.

References

Note: This product is for in vitro research use only