

IMPDH2 Rabbit mAb

Catalog No: #49979

Package Size: #49979-1 50ul #49979-2 100ul

Orders: order@signalwayantibody.com

Support: tech@signalwayantibody.com

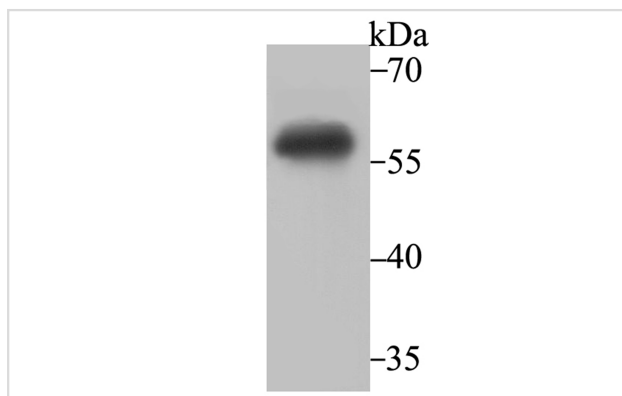
Description

Product Name	IMPDH2 Rabbit mAb
Host Species	Recombinant Rabbit
Clonality	Monoclonal antibody
Clone No.	JE40-87
Purification	ProA affinity purified
Applications	WB,ICC,IF,IHC,FC,IP
Species Reactivity	Hu, Ms, Rt
Immunogen Description	Recombinant protein within C-terminal human IMPDH2.
Other Names	IMDH2_HUMAN antibody IMP (inosine monophosphate) dehydrogenase 2 antibody IMP dehydrogenase 2 antibody IMP oxireductase 2 antibody IMPD 2 antibody IMPD2 antibody IMPDH 2 antibody IMPDH II antibody IMPDH-II antibody Impdh2 antibody Inosine 5' monophosphate dehydrogenase 2 antibody Inosine 5' phosphate dehydrogenase 2 antibody Inosine monophosphate dehydrogenase type II antibody Inosine-5"-monophosphate dehydrogenase 2 antibody
Accession No.	Swiss-Prot#:P12268
Uniprot	P12268
GeneID	3615;
Calculated MW	56 kDa
Formulation	1*TBS (pH7.4), 1%BSA, 40%Glycerol. Preservative: 0.05% Sodium Azide.
Storage	Store at -20°C

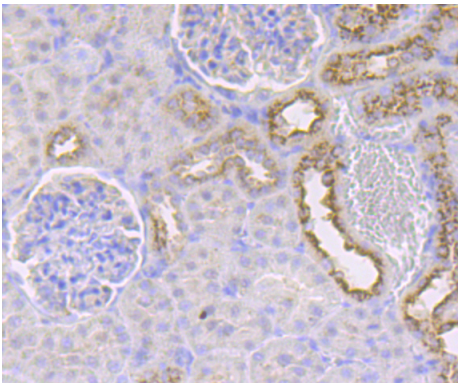
Application Details

WB: 1:500-1:2,000 IHC: 1:50-1:200 ICC/IF: 1:50-1:200IP: 1:10-1:50FC: 1:10-1:50

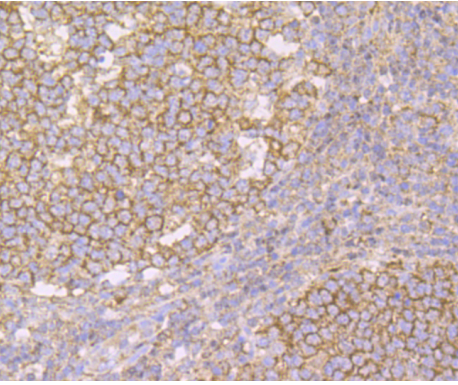
Images



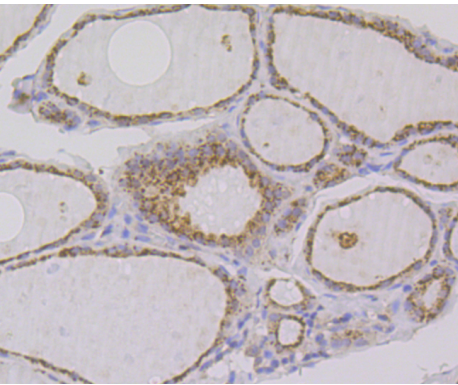
Western blot analysis of IMPDH2 on Daudi cell lysate using anti-IMPDH2 antibody at 1/2,000 dilution.



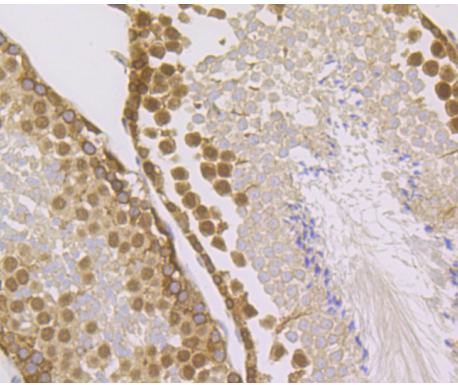
Immunohistochemical analysis of paraffin-embedded rat kidney tissue using anti-IMPDH2 antibody. Counter stained with hematoxylin.



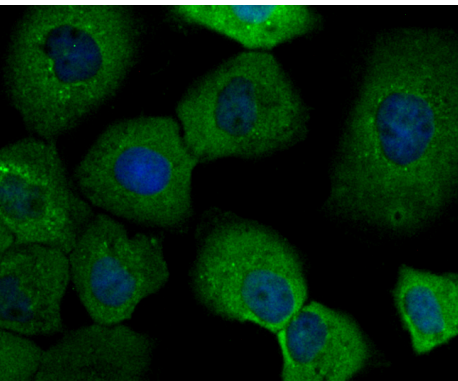
Immunohistochemical analysis of paraffin-embedded human tonsil tissue using anti-IMPDH2 antibody. Counter stained with hematoxylin.



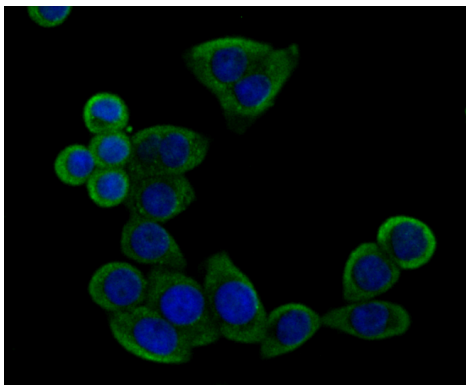
Immunohistochemical analysis of paraffin-embedded human thyroid gland tissue using anti-IMPDH2 antibody. Counter stained with hematoxylin.



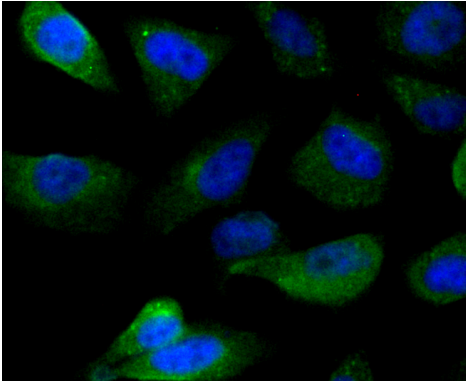
Immunohistochemical analysis of paraffin-embedded mouse testis tissue using anti-IMPDH2 antibody. Counter stained with hematoxylin.



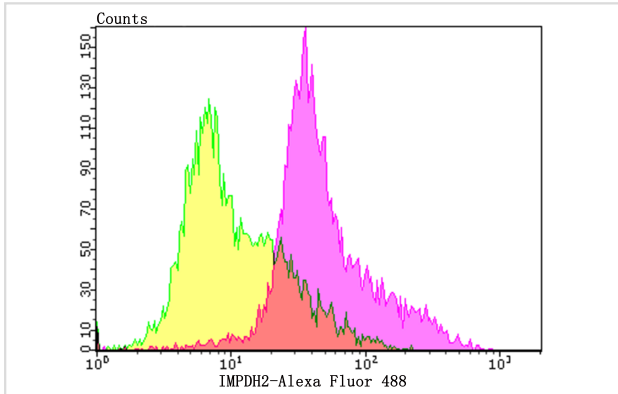
ICC staining IMPDH2 in A431 cells (green). The nuclear counter stain is DAPI (blue). Cells were fixed in paraformaldehyde, permeabilised with 0.25% Triton X100/PBS.



ICC staining IMPDH2 in LOVO cells (green). The nuclear counter stain is DAPI (blue). Cells were fixed in paraformaldehyde, permeabilised with 0.25% Triton X100/PBS.



ICC staining IMPDH2 in PC-3M cells (green). The nuclear counter stain is DAPI (blue). Cells were fixed in paraformaldehyde, permeabilised with 0.25% Triton X100/PBS.



Flow cytometric analysis of Daudi cells with IMPDH2 antibody at 1/100 dilution (purple) compared with an unlabelled control (cells without incubation with primary antibody; yellow). Alexa Fluor 488-conjugated goat anti-rabbit IgG was used as the secondary antibody.

Background

Catalyzes the conversion of inosine 5'-phosphate (IMP) to xanthosine 5'-phosphate (XMP), the first committed and rate-limiting step in the de novo synthesis of guanine nucleotides, and therefore plays an important role in the regulation of cell growth. Could also have a single-stranded nucleic acid-binding activity and could play a role in RNA and/or DNA metabolism. It may also have a role in the development of malignancy and the growth progression of some tumors.

References

Note: This product is for in vitro research use only