

Exportin-5 Rabbit mAb

Catalog No: #49981

Package Size: #49981-1 50ul #49981-2 100ul

Orders: order@signalwayantibody.com

Support: tech@signalwayantibody.com

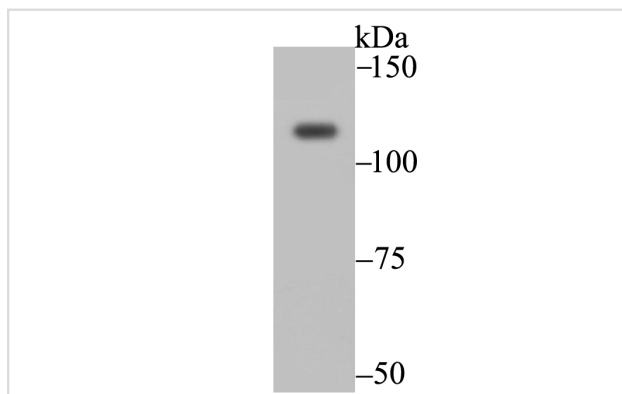
Description

Product Name	Exportin-5 Rabbit mAb
Host Species	Recombinant Rabbit
Clonality	Monoclonal antibody
Clone No.	JE40-91
Purification	ProA affinity purified
Applications	WB,IHC,FC,ICC/IF
Species Reactivity	Hu, Ms, Rt
Immunogen Description	Recombinant protein within human Exportin-5 aa 1-200.
Other Names	Exp 5 antibody Exp5 antibody Exportin 5 antibody Exportin-5 antibody Exportin5 antibody FLJ14239 antibody FLJ32057 antibody FLJ45606 antibody KIAA1291 antibody OTTHUMP0000016472 antibody Ran binding protein 21 antibody Ran-binding protein 21 antibody Ranbp 21 antibody Ranbp21 antibody Xpo 5 antibody xpo5 antibody XPO5_HUMAN antibody
Accession No.	Swiss-Prot#:Q9HAV4
Uniprot	Q9HAV4
GeneID	57510;
Calculated MW	136 kDa
Formulation	1*TBS (pH7.4), 1%BSA, 40%Glycerol. Preservative: 0.05% Sodium Azide.
Storage	Store at -20°C

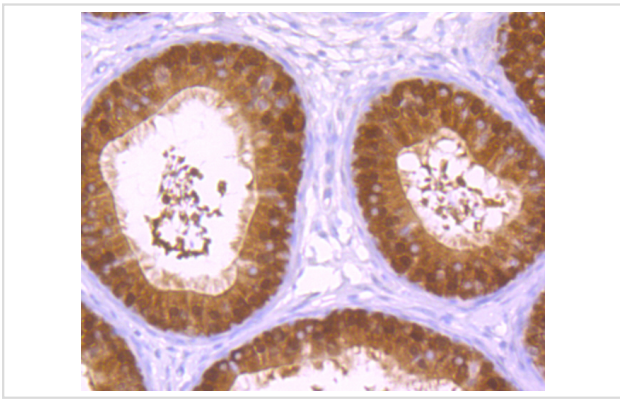
Application Details

WB: 1:500-1:2,000 IHC: 1:100-1:400 ICC/IF: 1:100 FC: 1:50-1:100

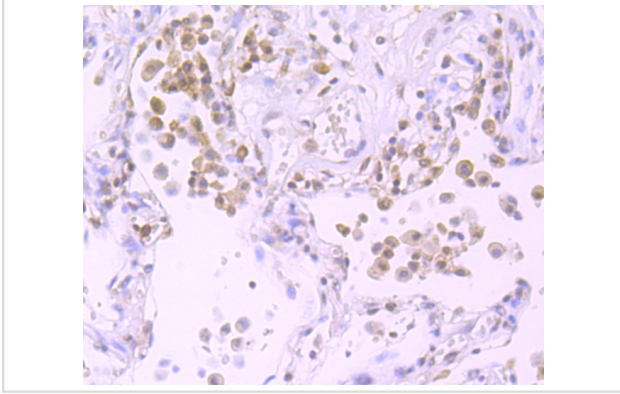
Images



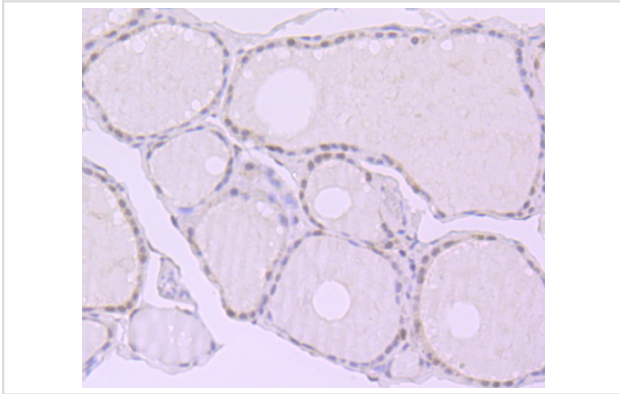
Western blot analysis of Exportin-5 on 293 cell using anti-Exportin-5 antibody at 1/2,000 dilution.



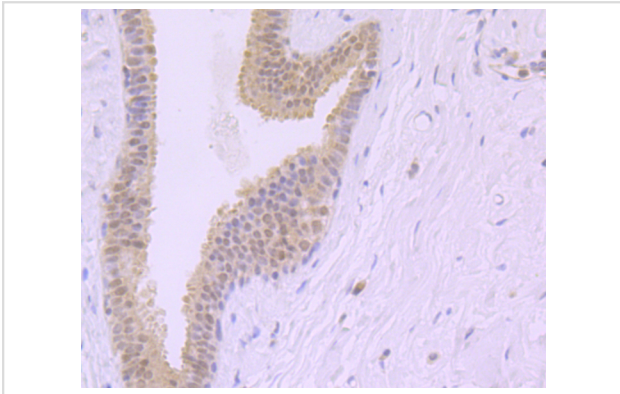
Immunohistochemical analysis of paraffin-embedded rat epididymis tissue using anti-Exportin-5 antibody. Counter stained with hematoxylin.



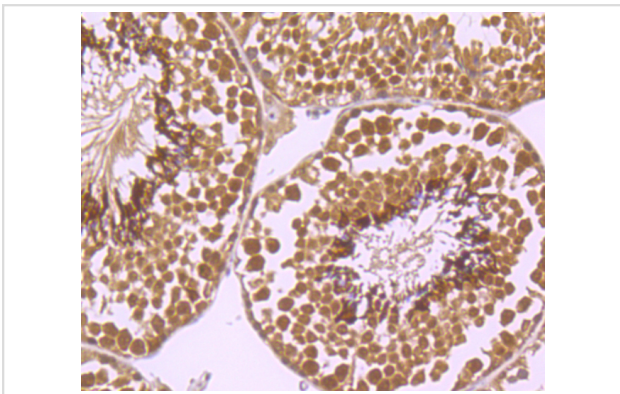
Immunohistochemical analysis of paraffin-embedded human lung cancer tissue using anti-Exportin-5 antibody. Counter stained with hematoxylin.



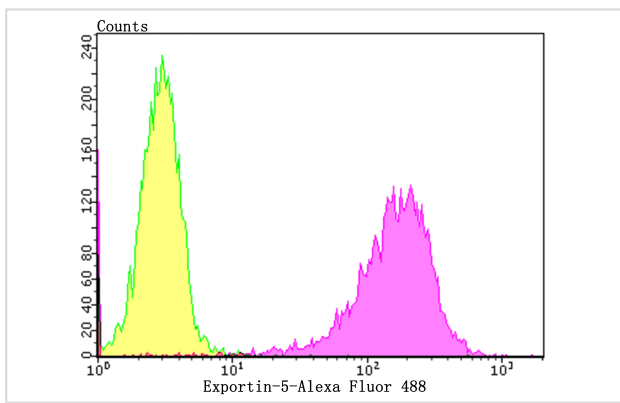
Immunohistochemical analysis of paraffin-embedded human thyroid gland tissue using anti-Exportin-5 antibody. Counter stained with hematoxylin.



Immunohistochemical analysis of paraffin-embedded human breast tissue using anti-Exportin-5 antibody. Counter stained with hematoxylin.



Immunohistochemical analysis of paraffin-embedded mouse testis tissue using anti-Exportin-5 antibody. Counter stained with hematoxylin.



Flow cytometric analysis of K562 cells with Exportin-5 antibody at 1/100 dilution (purple) compared with an unlabelled control (cells without incubation with primary antibody; yellow). Alexa Fluor 488-conjugated goat anti-rabbit IgG was used as the secondary antibody.

Background

The karyopherin-related nuclear transport factor Exportin 5, also known as Exp5, preferentially recognizes and transports RNAs containing minihelix motifs, structural cis-acting export elements that comprise a double-stranded stem (14 nucleotides) with a base-paired 5' end and a 3-8-nucleotide protruding 3' end. Exportin 5 also mediates protein transport between the nuclear and cytoplasmic compartment. Exportin 5 belongs to a large family of karyopherins and stimulates nuclear export of dsRNA binding proteins eEF1A and tRNA.

References

Note: This product is for in vitro research use only