

ACBP Polyclonal Antibody

Catalog No: #41608

Package Size: #41608-1 50ul #41608-2 100ul

Orders: order@signalwayantibody.com

Support: tech@signalwayantibody.com

Description

| | |
|-----------------------|---|
| Product Name | ACBP Polyclonal Antibody |
| Host Species | Rabbit |
| Clonality | Polyclonal |
| Purification | The antibody was affinity-purified from rabbit antiserum by affinity-chromatography using epitope-specific immunogen. |
| Applications | WB ELISA |
| Species Reactivity | Hu Ms Rt |
| Specificity | ACBP Polyclonal Antibody detects endogenous levels of ACBP protein. |
| Immunogen Type | peptide |
| Immunogen Description | Synthesized peptide derived from the C-terminal region of human ACBP. |
| Target Name | ACBP |
| Other Names | DBI; Acyl-CoA-binding protein; ACBP; Diazepam-binding inhibitor; DBI; Endozepine; EP |
| Accession No. | Swiss-Prot: P07108NCBI Gene ID: 1622 |
| Uniprot | P07108 |
| GeneID | 1622; |
| SDS-PAGE MW | 10kd |
| Concentration | 1mg/ml |
| Formulation | Liquid in PBS containing 50% glycerol, 0.5% BSA and 0.02% sodium azide. |
| Storage | Store at -20°C/1 year |

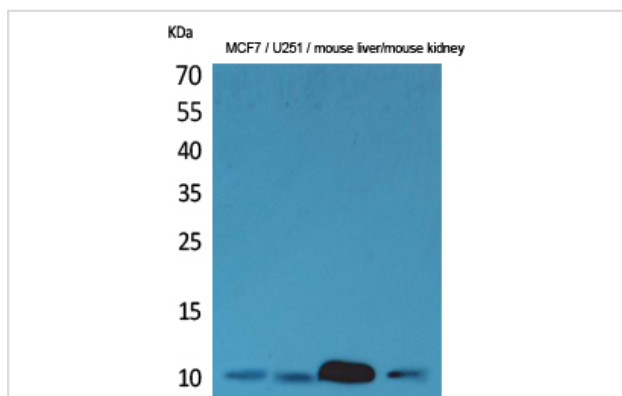
Application Details

Western Blot: 1/500 - 1/2000.

ELISA: 1/20000.

Not yet tested in other applications.

Images



Western Blot analysis of MCF7 U251 mouse liver mouse kidney cells using ACBP Polyclonal Antibody

Note: This product is for in vitro research use only