

## Glypican-3 Polyclonal Antibody

Catalog No: #41615

Package Size: #41615-1 50ul #41615-2 100ul

Orders: [order@signalwayantibody.com](mailto:order@signalwayantibody.com)Support: [tech@signalwayantibody.com](mailto:tech@signalwayantibody.com)

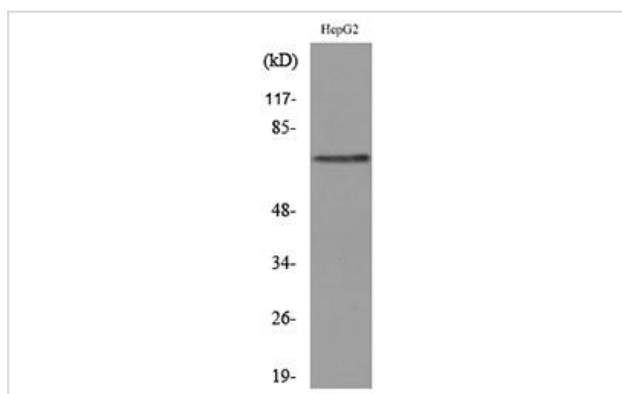
## Description

Product Name	Glypican-3 Polyclonal Antibody
Host Species	Rabbit
Clonality	Polyclonal
Purification	The antibody was affinity-purified from rabbit antiserum by affinity-chromatography using epitope-specific immunogen.
Applications	WB;IHC;IF
Species Reactivity	Hu Ms Rt
Specificity	Glypican-3 Polyclonal Antibody detects endogenous levels of Glypican-3 protein.
Immunogen Description	Synthesized peptide derived from the Internal region of human Glypican-3.
Target Name	Glypican-3
Other Names	GPC3; OCI5; Glypican-3; GTR2-2; Intestinal protein OCI-5; MXR7
Accession No.	Swiss-Prot: P51654NCBI Gene ID: 2719
Uniprot	P51654
GeneID	2719;
SDS-PAGE MW	70kd
Concentration	1mg/ml
Formulation	Liquid in PBS containing 50% glycerol, 0.5% BSA and 0.02% sodium azide.
Storage	Store at -20°C/1 year

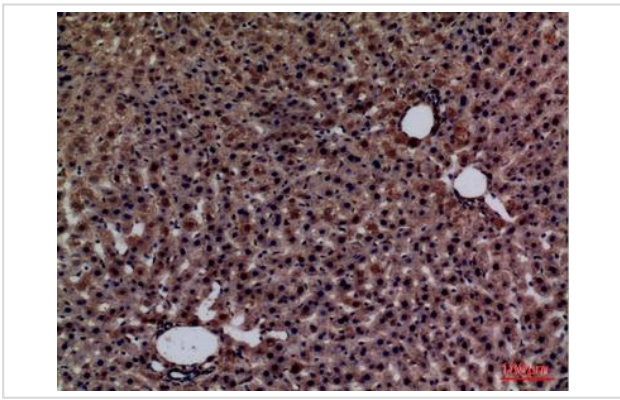
## Application Details

WB 1:500 - 1:2000. IHC: 1:100-300 . IF 1:50-200

## Images



Western blot analysis of lysate from HepG2 cells



Immunohistochemical analysis of paraffin-embedded rat-liver, antibody was diluted at 1:100

---

Note: This product is for in vitro research use only