

## Calbindin D28K Polyclonal Antibody

Catalog No: #41617

Package Size: #41617-1 50ul #41617-2 100ul

Orders: [order@signalwayantibody.com](mailto:order@signalwayantibody.com)Support: [tech@signalwayantibody.com](mailto:tech@signalwayantibody.com)

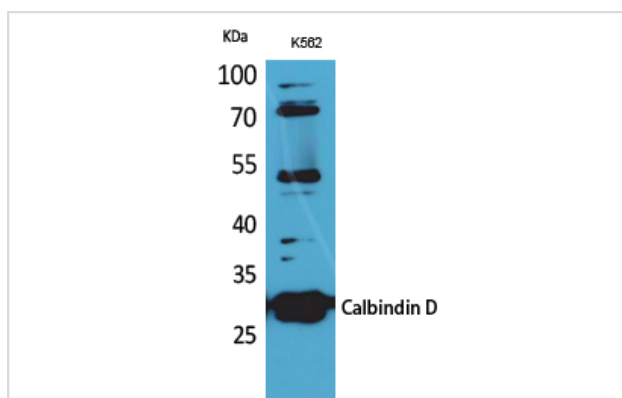
## Description

Product Name	Calbindin D28K Polyclonal Antibody
Host Species	Rabbit
Clonality	Polyclonal
Purification	The antibody was affinity-purified from rabbit antiserum by affinity-chromatography using epitope-specific immunogen.
Applications	WB
Species Reactivity	Hu Ms Rt
Specificity	Calbindin D28K Polyclonal Antibody detects endogenous levels of Calbindin D28K protein.
Immunogen Type	peptide
Immunogen Description	Synthesized peptide derived from the C-terminal region of human Calbindin D28K.
Target Name	Calbindin D28K
Other Names	CALB1; CAB27; Calbindin; Calbindin D28; D-28K; Vitamin D-dependent calcium-binding protein, avian-type
Accession No.	Swiss-Prot: P05937NCBI Gene ID: 793
Uniprot	P05937
GeneID	793;
SDS-PAGE MW	30kd
Concentration	1mg/ml
Formulation	Liquid in PBS containing 50% glycerol, 0.5% BSA and 0.02% sodium azide.
Storage	Store at -20°C/1 year

## Application Details

Western Blot: 1/500 - 1/2000.

## Images



Western Blot analysis of K562 cells using Calbindin D28K Polyclonal Antibody

---

Note: This product is for in vitro research use only