

## Kallistatin Polyclonal Antibody

Catalog No: #41624

Package Size: #41624-1 50ul #41624-2 100ul

Orders: order@signalwayantibody.com

Support: tech@signalwayantibody.com

## Description

Product Name	Kallistatin Polyclonal Antibody
Host Species	Rabbit
Clonality	Polyclonal
Purification	The antibody was affinity-purified from rabbit antiserum by affinity-chromatography using epitope-specific immunogen.
Applications	WB ELISA
Species Reactivity	Hu
Specificity	Kallistatin Polyclonal Antibody detects endogenous levels of Kallistatin protein.
Immunogen Type	peptide
Immunogen Description	Synthesized peptide derived from the Internal region of human Kallistatin.
Target Name	Kallistatin
Other Names	SERPINA4; KST; PI4; Kallistatin; Kallikrein inhibitor; Peptidase inhibitor 4; PI-4; Serpin A4
Accession No.	Swiss-Prot: P29622NCBI Gene ID: 5267
Uniprot	P29622
GeneID	5267;
SDS-PAGE MW	47kd
Concentration	1mg/ml
Formulation	Liquid in PBS containing 50% glycerol, 0.5% BSA and 0.02% sodium azide.
Storage	Store at -20°C/1 year

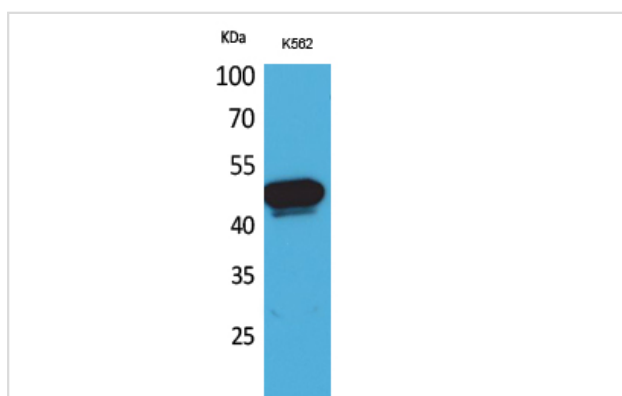
## Application Details

Western Blot: 1/500 - 1/2000.

ELISA: 1/20000.

Not yet tested in other applications.

## Images



Western Blot analysis of K562 cells using Kallistatin Polyclonal Antibody

---

Note: This product is for in vitro research use only