

MCM3 Polyclonal Antibody

Catalog No: #41625

Package Size: #41625-1 50ul #41625-2 100ul

Orders: order@signalwayantibody.comSupport: tech@signalwayantibody.com

Description

Product Name	MCM3 Polyclonal Antibody
Host Species	Rabbit
Clonality	Polyclonal
Purification	The antibody was affinity-purified from rabbit antiserum by affinity-chromatography using epitope-specific immunogen.
Applications	WB ELISA
Species Reactivity	Hu
Specificity	MCM3 Polyclonal Antibody detects endogenous levels of MCM3 protein.
Immunogen Type	peptide
Immunogen Description	Synthesized peptide derived from the Internal region of human MCM3.
Target Name	MCM3
Other Names	MCM3; DNA replication licensing factor MCM3; DNA polymerase alpha holoenzyme-associated protein P1; P1-MCM3; RLF subunit beta; p102
Accession No.	Swiss-Prot: P25205NCBI Gene ID: 4172
Uniprot	P25205
GeneID	4172;
SDS-PAGE MW	89kd
Concentration	1mg/ml
Formulation	Liquid in PBS containing 50% glycerol, 0.5% BSA and 0.02% sodium azide.
Storage	Store at -20°C/1 year

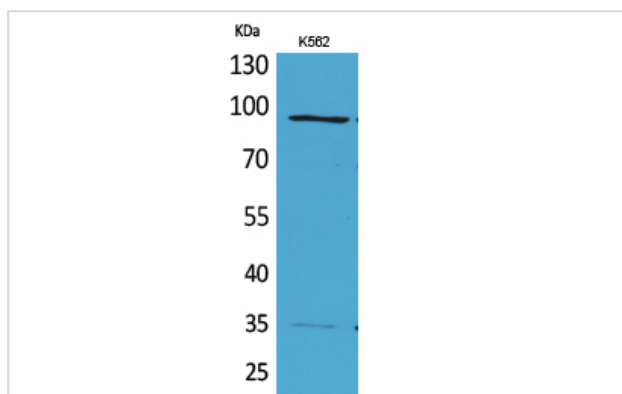
Application Details

Western Blot: 1/500 - 1/2000.

ELISA: 1/20000.

Not yet tested in other applications.

Images



Western Blot analysis of K562 cells using MCM3 Polyclonal Antibody

Note: This product is for in vitro research use only