

Keap1 Polyclonal Antibody

Catalog No: #41626

Package Size: #41626-1 50ul #41626-2 100ul

Orders: order@signalwayantibody.com

Support: tech@signalwayantibody.com

Description

Product Name	Keap1 Polyclonal Antibody
Host Species	Rabbit
Clonality	Polyclonal
Purification	The antibody was affinity-purified from rabbit antiserum by affinity-chromatography using epitope-specific immunogen.
Applications	WB ELISA
Species Reactivity	Hu Ms Rt
Specificity	Keap1 Polyclonal Antibody detects endogenous levels of Keap1 protein.
Immunogen Type	peptide
Immunogen Description	Synthesized peptide derived from the Internal region of human Keap1.
Target Name	Keap1
Other Names	KEAP1; INRF2; KIAA0132; KLHL19; Kelch-like ECH-associated protein 1; Cytosolic inhibitor of Nrf2; INrf2; Kelch-like protein 19
Accession No.	Swiss-Prot: Q14145NCBI Gene ID: 9817
Uniprot	Q14145
GeneID	9817;
SDS-PAGE MW	70kd
Concentration	1mg/ml
Formulation	Liquid in PBS containing 50% glycerol, 0.5% BSA and 0.02% sodium azide.
Storage	Store at -20°C/1 year

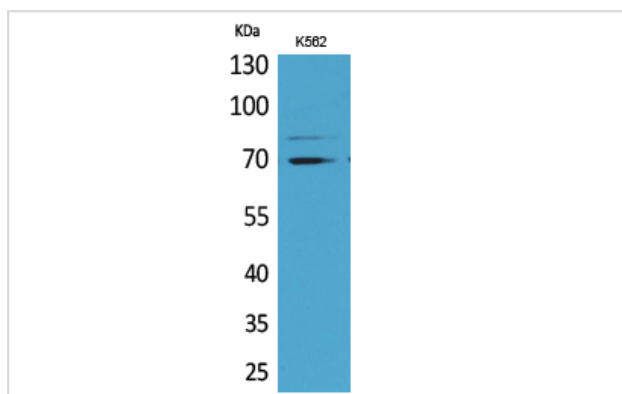
Application Details

Western Blot: 1/500 - 1/2000.

ELISA: 1/20000.

Not yet tested in other applications.

Images



Western Blot analysis of K562 cells using Keap1 Polyclonal Antibody

Note: This product is for in vitro research use only