

ERp57 Polyclonal Antibody

Catalog No: #41628

Package Size: #41628-1 50ul #41628-2 100ul

Orders: order@signalwayantibody.com

Support: tech@signalwayantibody.com

Description

Product Name	ERp57 Polyclonal Antibody
Host Species	Rabbit
Clonality	Polyclonal
Purification	The antibody was affinity-purified from rabbit antiserum by affinity-chromatography using epitope-specific immunogen.
Applications	WB ELISA
Species Reactivity	Hu Ms Rt
Specificity	ERp57 Polyclonal Antibody detects endogenous levels of ERp57 protein.
Immunogen Type	peptide
Immunogen Description	Synthesized peptide derived from the Internal region of human ERp57.
Target Name	ERp57
Other Names	PDIA3; ERP57; ERP60; GRP58; Protein disulfide-isomerase A3; 58 kDa glucose-regulated protein; 58 kDa microsomal protein; p58; Disulfide isomerase ER-60;
Accession No.	Swiss-Prot: P30101NCBI Gene ID: 2923
Uniprot	P30101
GeneID	2923;
SDS-PAGE MW	55kd
Concentration	1mg/ml
Formulation	Liquid in PBS containing 50% glycerol, 0.5% BSA and 0.02% sodium azide.
Storage	Store at -20°C/1 year

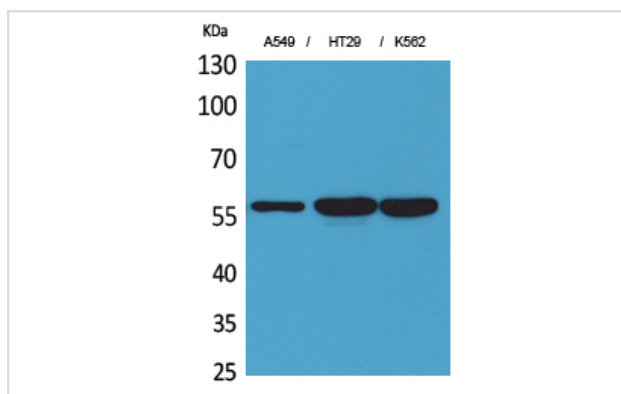
Application Details

Western Blot: 1/500 - 1/2000.

ELISA: 1/20000.

Not yet tested in other applications.

Images



Western Blot analysis of A549 HT29 K562 cells using ERp57 Polyclonal Antibody

Note: This product is for in vitro research use only