

## Protein C Polyclonal Antibody

Catalog No: #41629

Package Size: #41629-1 50ul #41629-2 100ul

Orders: [order@signalwayantibody.com](mailto:order@signalwayantibody.com)Support: [tech@signalwayantibody.com](mailto:tech@signalwayantibody.com)

## Description

Product Name	Protein C Polyclonal Antibody
Host Species	Rabbit
Clonality	Polyclonal
Purification	The antibody was affinity-purified from rabbit antiserum by affinity-chromatography using epitope-specific immunogen.
Applications	WB ELISA
Species Reactivity	Hu
Specificity	Protein C Polyclonal Antibody detects endogenous levels of Protein C protein.
Immunogen Type	peptide
Immunogen Description	Synthesized peptide derived from the Internal region of human Protein C.
Target Name	Protein C
Other Names	PROC; Vitamin K-dependent protein C; Anticoagulant protein C; Autoprothrombin IIA; Blood coagulation factor XIV
Accession No.	Swiss-Prot: P04070NCBI Gene ID: 5624
Uniprot	P04070
GeneID	5624;
SDS-PAGE MW	52kd
Concentration	1mg/ml
Formulation	Liquid in PBS containing 50% glycerol, 0.5% BSA and 0.02% sodium azide.
Storage	Store at -20°C/1 year

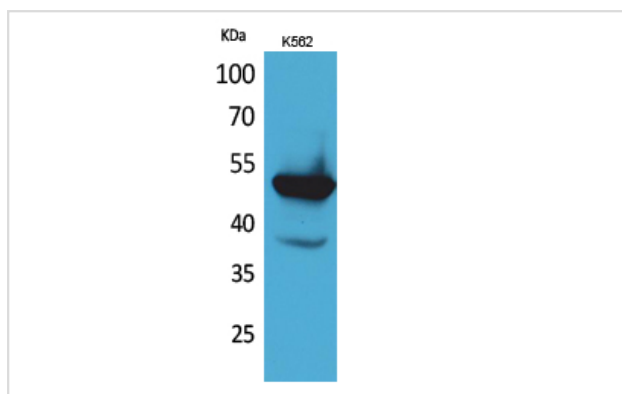
## Application Details

Western Blot: 1/500 - 1/2000.

ELISA: 1/20000.

Not yet tested in other applications.

## Images



Western Blot analysis of K562 cells using Protein C Polyclonal Antibody

---

Note: This product is for in vitro research use only