

CYP11A1 Polyclonal Antibody

Catalog No: #41631

Package Size: #41631-1 50ul #41631-2 100ul

Orders: order@signalwayantibody.com

Support: tech@signalwayantibody.com

Description

| | |
|-----------------------|--|
| Product Name | CYP11A1 Polyclonal Antibody |
| Host Species | Rabbit |
| Clonality | Polyclonal |
| Purification | The antibody was affinity-purified from rabbit antiserum by affinity-chromatography using epitope-specific immunogen. |
| Applications | WB ELISA |
| Species Reactivity | Hu |
| Specificity | CYP11A1 Polyclonal Antibody detects endogenous levels of CYP11A1 protein. |
| Immunogen Type | peptide |
| Immunogen Description | Synthesized peptide derived from the C-terminal region of human CYP11A1. |
| Target Name | CYP11A1 |
| Other Names | CYP11A1; CYP11A; Cholesterol side-chain cleavage enzyme, mitochondrial; CYPXIA1; Cholesterol desmolase; Cytochrome P450 11A1; Cytochrome P450(scc) |
| Accession No. | Swiss-Prot: P05108NCBI Gene ID: 1583 |
| Uniprot | P05108 |
| GeneID | 1583; |
| SDS-PAGE MW | 57kd |
| Concentration | 1mg/ml |
| Formulation | Liquid in PBS containing 50% glycerol, 0.5% BSA and 0.02% sodium azide. |
| Storage | Store at -20°C/1 year |

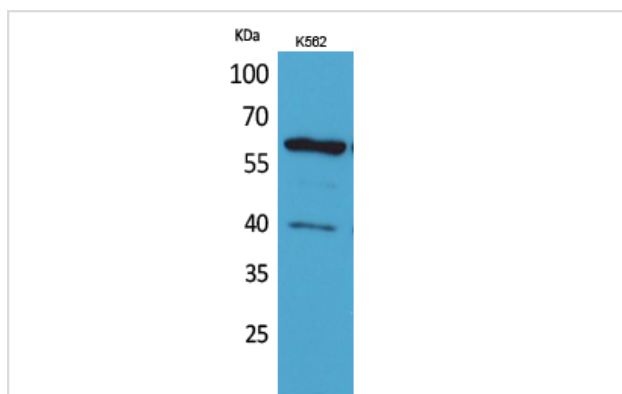
Application Details

Western Blot: 1/500 - 1/2000.

ELISA: 1/20000.

Not yet tested in other applications.

Images



Western Blot analysis of K562 cells using CYP11A1 Polyclonal Antibody

Note: This product is for in vitro research use only