

## HDC Polyclonal Antibody

Catalog No: #41633

Package Size: #41633-1 50ul #41633-2 100ul

Orders: [order@signalwayantibody.com](mailto:order@signalwayantibody.com)Support: [tech@signalwayantibody.com](mailto:tech@signalwayantibody.com)

## Description

Product Name	HDC Polyclonal Antibody
Host Species	Rabbit
Clonality	Polyclonal
Purification	The antibody was affinity-purified from rabbit antiserum by affinity-chromatography using epitope-specific immunogen.
Applications	WB ELISA
Species Reactivity	Hu Ms Rt
Specificity	HDC Polyclonal Antibody detects endogenous levels of HDC protein.
Immunogen Type	peptide
Immunogen Description	Synthesized peptide derived from the Internal region of human HDC.
Target Name	HDC
Other Names	HDC; Histidine decarboxylase; HDC
Accession No.	Swiss-Prot: P19113NCBI Gene ID: 3067
Uniprot	P19113
GeneID	3067;
SDS-PAGE MW	72kd
Concentration	1mg/ml
Formulation	Liquid in PBS containing 50% glycerol, 0.5% BSA and 0.02% sodium azide.
Storage	Store at -20°C/1 year

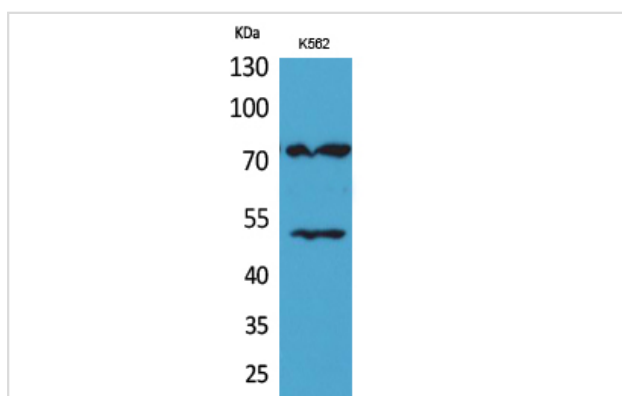
## Application Details

Western Blot: 1/500 - 1/2000.

ELISA: 1/20000.

Not yet tested in other applications.

## Images



Western Blot analysis of K562 cells using HDC Polyclonal Antibody

---

Note: This product is for in vitro research use only