

## SNAP 23 Polyclonal Antibody

Catalog No: #41639

Package Size: #41639-1 50ul #41639-2 100ul

Orders: order@signalwayantibody.com

Support: tech@signalwayantibody.com

## Description

Product Name	SNAP 23 Polyclonal Antibody
Host Species	Rabbit
Clonality	Polyclonal
Purification	The antibody was affinity-purified from rabbit antiserum by affinity-chromatography using epitope-specific immunogen.
Applications	WB ELISA
Species Reactivity	Hu
Specificity	SNAP 23 Polyclonal Antibody detects endogenous levels of SNAP 23 protein.
Immunogen Type	peptide
Immunogen Description	Synthesized peptide derived from the C-terminal region of human SNAP 23.
Target Name	SNAP 23
Other Names	SNAP23; Synaptosomal-associated protein 23; SNAP-23; Vesicle-membrane fusion protein SNAP-23
Accession No.	Swiss-Prot: O00161NCBI Gene ID: 8773
Uniprot	O00161
GeneID	8773;
SDS-PAGE MW	23kd
Concentration	1mg/ml
Formulation	Liquid in PBS containing 50% glycerol, 0.5% BSA and 0.02% sodium azide.
Storage	Store at -20°C/1 year

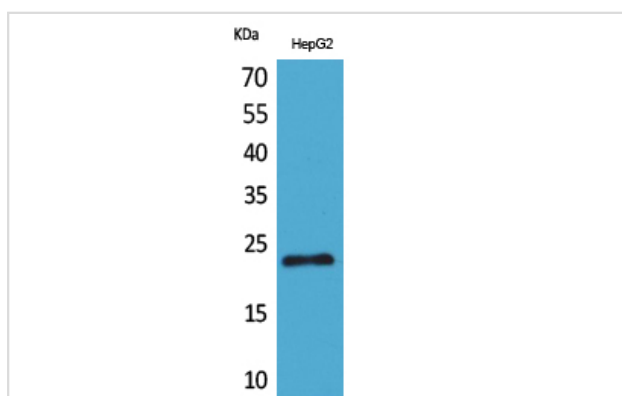
## Application Details

Western Blot: 1/500 - 1/2000.

ELISA: 1/20000.

Not yet tested in other applications.

## Images



Western Blot analysis of HepG2 cells using SNAP 23 Polyclonal Antibody

---

Note: This product is for in vitro research use only