

CD7 Polyclonal Antibody

Catalog No: #41649

Package Size: #41649-1 50ul #41649-2 100ul

Orders: order@signalwayantibody.comSupport: tech@signalwayantibody.com

Description

Product Name	CD7 Polyclonal Antibody
Host Species	Rabbit
Clonality	Polyclonal
Purification	The antibody was affinity-purified from rabbit antiserum by affinity-chromatography using epitope-specific immunogen.
Applications	WB ELISA
Species Reactivity	Hu
Specificity	CD7 Polyclonal Antibody detects endogenous levels of CD7 protein.
Immunogen Type	peptide
Immunogen Description	Synthesized peptide derived from the Internal region of human CD7.
Target Name	CD7
Other Names	CD7; T-cell antigen CD7; GP40; T-cell leukemia antigen; T-cell surface antigen Leu-9; TP41; CD7
Accession No.	Swiss-Prot: P09564NCBI Gene ID: 924
Uniprot	P09564
GeneID	924;
SDS-PAGE MW	25kd
Concentration	1mg/ml
Formulation	Liquid in PBS containing 50% glycerol, 0.5% BSA and 0.02% sodium azide.
Storage	Store at -20°C/1 year

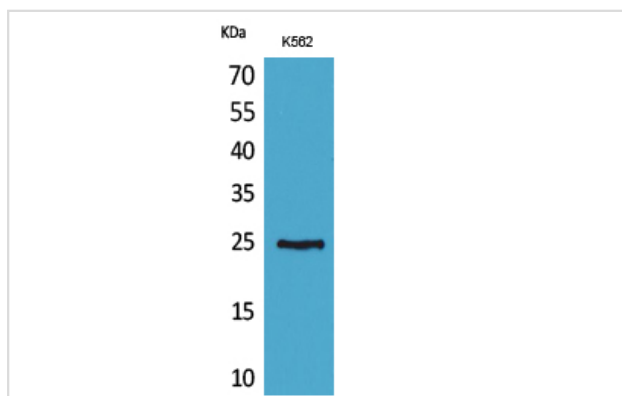
Application Details

Western Blot: 1/500 - 1/2000.

ELISA: 1/20000.

Not yet tested in other applications.

Images



Western Blot analysis of K562 cells using CD7 Polyclonal Antibody

Note: This product is for in vitro research use only