

## CD28 Polyclonal Antibody

Catalog No: #41651

Package Size: #41651-1 50ul #41651-2 100ul

Orders: order@signalwayantibody.com

Support: tech@signalwayantibody.com

## Description

Product Name	CD28 Polyclonal Antibody
Host Species	Rabbit
Clonality	Polyclonal
Purification	The antibody was affinity-purified from rabbit antiserum by affinity-chromatography using epitope-specific immunogen.
Applications	WB ELISA
Species Reactivity	Hu
Specificity	CD28 Polyclonal Antibody detects endogenous levels of CD28 protein.
Immunogen Type	peptide
Immunogen Description	Synthesized peptide derived from the Internal region of human CD28.
Target Name	CD28
Other Names	CD28; T-cell-specific surface glycoprotein CD28; TP44; CD28
Accession No.	Swiss-Prot: P10747NCBI Gene ID: 940
Uniprot	P10747
GeneID	940;
SDS-PAGE MW	24kd
Concentration	1mg/ml
Formulation	Liquid in PBS containing 50% glycerol, 0.5% BSA and 0.02% sodium azide.
Storage	Store at -20°C/1 year

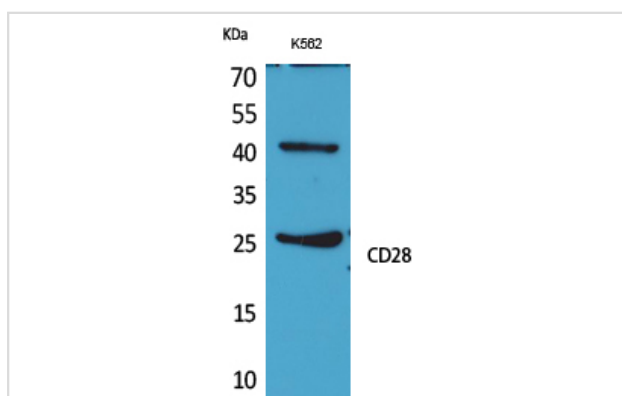
## Application Details

Western Blot: 1/500 - 1/2000.

ELISA: 1/20000.

Not yet tested in other applications.

## Images



Western Blot analysis of K562 cells using CD28 Polyclonal Antibody

---

Note: This product is for in vitro research use only