

## CD32-A Polyclonal Antibody

Catalog No: #41652

Package Size: #41652-1 50ul #41652-2 100ul

Orders: order@signalwayantibody.com

Support: tech@signalwayantibody.com

## Description

Product Name	CD32-A Polyclonal Antibody
Host Species	Rabbit
Clonality	Polyclonal
Purification	The antibody was affinity-purified from rabbit antiserum by affinity-chromatography using epitope-specific immunogen.
Applications	WB ELISA
Species Reactivity	Hu
Specificity	CD32-A Polyclonal Antibody detects endogenous levels of CD32-A protein.
Immunogen Type	peptide
Immunogen Description	Synthesized peptide derived from the Internal region of human CD32-A.
Target Name	CD32-A
Other Names	FCGR2A; CD32; FCG2; FCGR2A1; IGFR2; Low affinity immunoglobulin gamma Fc region receptor II-a; IgG Fc receptor II-a; CDw32; Fc-gamma RII-a; Fc-gamma-RIIa; FcRII-a; CD32
Accession No.	Swiss-Prot: P12318NCBI Gene ID: 2212
Uniprot	P12318
GeneID	2212;
SDS-PAGE MW	34kd
Concentration	1mg/ml
Formulation	Liquid in PBS containing 50% glycerol, 0.5% BSA and 0.02% sodium azide.
Storage	Store at -20°C/1 year

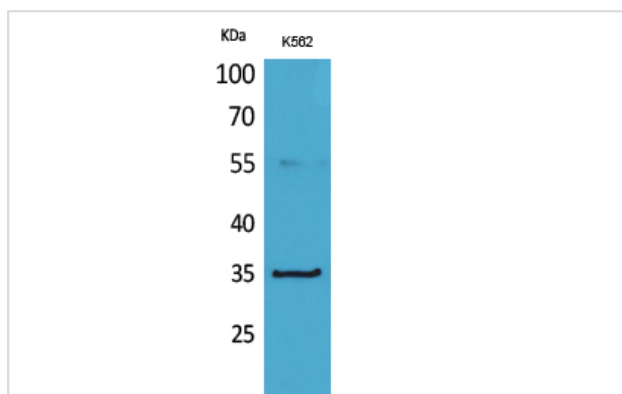
## Application Details

Western Blot: 1/500 - 1/2000.

ELISA: 1/20000.

Not yet tested in other applications.

## Images



Western Blot analysis of K562 cells using CD32-A Polyclonal Antibody

---

Note: This product is for in vitro research use only