

CD32-B/C Polyclonal Antibody

Catalog No: #41653

Package Size: #41653-1 50ul #41653-2 100ul

Orders: order@signalwayantibody.comSupport: tech@signalwayantibody.com

Description

Product Name	CD32-B/C Polyclonal Antibody
Host Species	Rabbit
Clonality	Polyclonal
Purification	The antibody was affinity-purified from rabbit antiserum by affinity-chromatography using epitope-specific immunogen.
Applications	WB ELISA
Species Reactivity	Hu
Specificity	CD32-B/C Polyclonal Antibody detects endogenous levels of CD32-B/C protein.
Immunogen Type	peptide
Immunogen Description	Synthesized peptide derived from the Internal region of human CD32-B/C.
Target Name	CD32-B/C
Other Names	FCGR2B; CD32; FCG2; IGFR2; Low affinity immunoglobulin gamma Fc region receptor II-b; IgG Fc receptor II-b; CDw32; Fc-gamma RII-b; Fc-gamma-RIIb; FcRII-b; CD32; FCGR2C; CD32; FCG2; IGFR2;
Accession No.	Swiss-Prot: P31994NCBI Gene ID: 2213
Uniprot	P31994
GeneID	2213;
SDS-PAGE MW	35kd
Concentration	1mg/ml
Formulation	Liquid in PBS containing 50% glycerol, 0.5% BSA and 0.02% sodium azide.
Storage	Store at -20°C/1 year

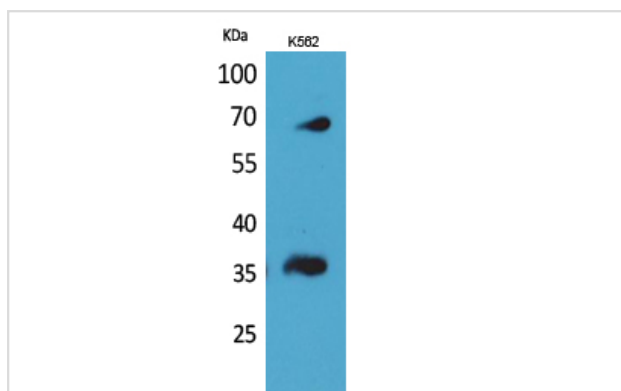
Application Details

Western Blot: 1/500 - 1/2000.

ELISA: 1/20000.

Not yet tested in other applications.

Images



Western Blot analysis of K562 cells using CD32-B/C Polyclonal Antibody

Note: This product is for in vitro research use only