

CD48 Polyclonal Antibody

Catalog No: #41654

Package Size: #41654-1 50ul #41654-2 100ul

Orders: order@signalwayantibody.comSupport: tech@signalwayantibody.com

Description

Product Name	CD48 Polyclonal Antibody
Host Species	Rabbit
Clonality	Polyclonal
Purification	The antibody was affinity-purified from rabbit antiserum by affinity-chromatography using epitope-specific immunogen.
Applications	WB ELISA
Species Reactivity	Hu
Specificity	CD48 Polyclonal Antibody detects endogenous levels of CD48 protein.
Immunogen Type	peptide
Immunogen Description	Synthesized peptide derived from the Internal region of human CD48.
Target Name	CD48
Other Names	CD48; BCM1; BLAST1; CD48 antigen; B-lymphocyte activation marker BLAST-1; BCM1 surface antigen; Leukocyte antigen MEM-102; TCT.1; CD48
Accession No.	Swiss-Prot: P09326NCBI Gene ID: 962
Uniprot	P09326
GeneID	962;
SDS-PAGE MW	40kd
Concentration	1mg/ml
Formulation	Liquid in PBS containing 50% glycerol, 0.5% BSA and 0.02% sodium azide.
Storage	Store at -20°C/1 year

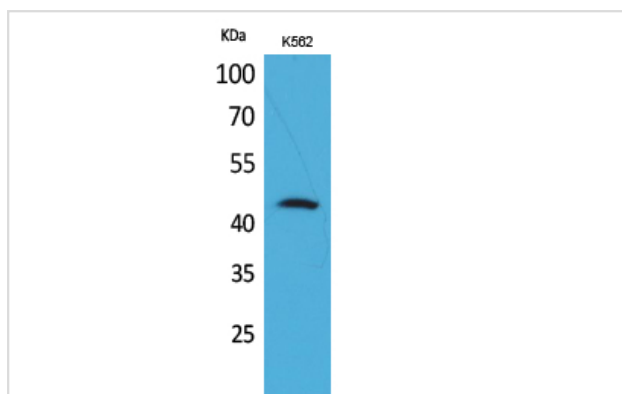
Application Details

Western Blot: 1/500 - 1/2000.

ELISA: 1/20000.

Not yet tested in other applications.

Images



Western Blot analysis of K562 cells using CD48 Polyclonal Antibody

Note: This product is for in vitro research use only