

Integrin α 4 Polyclonal Antibody

Catalog No: #41655

Package Size: #41655-1 50ul #41655-2 100ul

Orders: order@signalwayantibody.com

Support: tech@signalwayantibody.com

Description

Product Name	Integrin α 4 Polyclonal Antibody
Host Species	Rabbit
Clonality	Polyclonal
Purification	The antibody was affinity-purified from rabbit antiserum by affinity-chromatography using epitope-specific immunogen.
Applications	WB ELISA
Species Reactivity	Hu Ms Rt
Specificity	Integrin α 4 Polyclonal Antibody detects endogenous levels of Integrin α 4 protein.
Immunogen Type	peptide
Immunogen Description	Synthesized peptide derived from the Internal region of human Integrin α 4.
Target Name	Integrin α 4
Other Names	ITGA4; CD49D; Integrin alpha-4; CD49 antigen-like family member D; Integrin alpha-IV; VLA-4 subunit alpha; CD49d
Accession No.	Swiss-Prot: P13612NCBI Gene ID: 3676
Uniprot	P13612
GeneID	3676;
SDS-PAGE MW	120kd
Concentration	1mg/ml
Formulation	Liquid in PBS containing 50% glycerol, 0.5% BSA and 0.02% sodium azide.
Storage	Store at -20°C/1 year

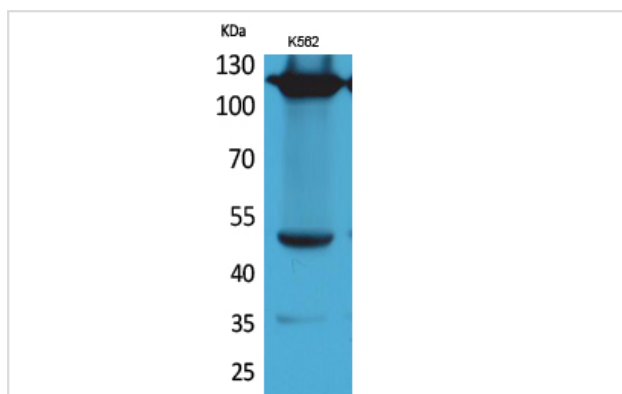
Application Details

Western Blot: 1/500 - 1/2000.

ELISA: 1/20000.

Not yet tested in other applications.

Images

Western Blot analysis of K562 cells using Integrin α 4 Polyclonal Antibody

Note: This product is for in vitro research use only