

## CD55 Polyclonal Antibody

Catalog No: #41657

Package Size: #41657-1 50ul #41657-2 100ul

Orders: order@signalwayantibody.com

Support: tech@signalwayantibody.com

## Description

Product Name	CD55 Polyclonal Antibody
Host Species	Rabbit
Clonality	Polyclonal
Purification	The antibody was affinity-purified from rabbit antiserum by affinity-chromatography using epitope-specific immunogen.
Applications	WB ELISA
Species Reactivity	Hu
Specificity	CD55 Polyclonal Antibody detects endogenous levels of CD55 protein.
Immunogen Type	peptide
Immunogen Description	Synthesized peptide derived from the Internal region of human CD55.
Target Name	CD55
Other Names	CD55; CR; DAF; Complement decay-accelerating factor; CD55
Accession No.	Swiss-Prot: P08174NCBI Gene ID: 1604
Uniprot	P08174
GeneID	1604;
SDS-PAGE MW	42kd
Concentration	1mg/ml
Formulation	Liquid in PBS containing 50% glycerol, 0.5% BSA and 0.02% sodium azide.
Storage	Store at -20°C/1 year

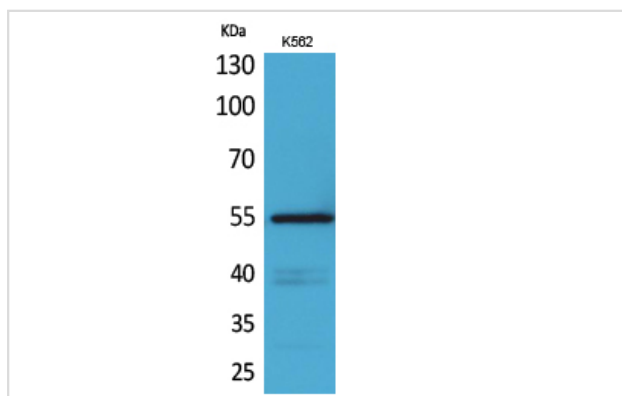
## Application Details

Western Blot: 1/500 - 1/2000.

ELISA: 1/20000.

Not yet tested in other applications.

## Images



Western Blot analysis of K562 cells using CD55 Polyclonal Antibody

---

Note: This product is for in vitro research use only