

CD59 Polyclonal Antibody

Catalog No: #41659

Package Size: #41659-1 50ul #41659-2 100ul

Orders: order@signalwayantibody.com

Support: tech@signalwayantibody.com

Description

| | |
|-----------------------|--|
| Product Name | CD59 Polyclonal Antibody |
| Host Species | Rabbit |
| Clonality | Polyclonal |
| Purification | The antibody was affinity-purified from rabbit antiserum by affinity-chromatography using epitope-specific immunogen. |
| Applications | WB ELISA IHC IF |
| Species Reactivity | Hu Ms Rt |
| Specificity | CD59 Polyclonal Antibody detects endogenous levels of CD59 protein. |
| Immunogen Description | Synthesized peptide derived from the Internal region of human CD59. |
| Target Name | CD59 |
| Other Names | CD59; MIC11; MIN1; MIN2; MIN3; MSK21; CD59 glycoprotein; 1F5 antigen; 20 kDa homologous restriction factor; HRF-20; HRF20; MAC-inhibitory protein; MAC-IP; |
| Accession No. | Swiss-Prot: P13987NCBI Gene ID: 966 |
| Uniprot | P13987 |
| GeneID | 966; |
| SDS-PAGE MW | 16kd |
| Concentration | 1mg/ml |
| Formulation | Liquid in PBS containing 50% glycerol, 0.5% BSA and 0.02% sodium azide. |
| Storage | Store at -20°C/1 year |

Application Details

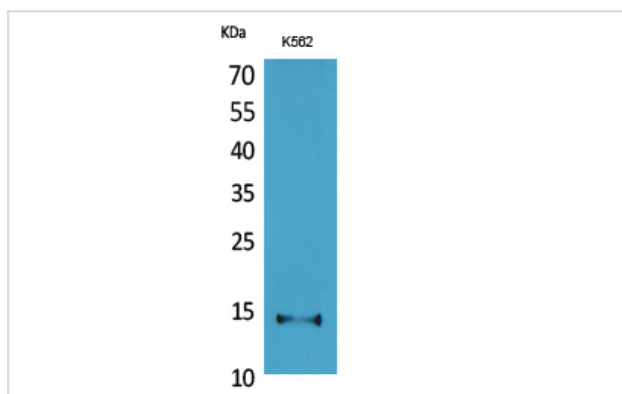
Western Blot: 1/500 - 1/2000.

ELISA: 1/20000.

Not yet tested in other applications.

IHC: 1:100-300

Images



Western Blot analysis of K562 cells using CD59 Polyclonal Antibody

Note: This product is for in vitro research use only