

## PSG1 Polyclonal Antibody

Catalog No: #41660

Package Size: #41660-1 50ul #41660-2 100ul

Orders: [order@signalwayantibody.com](mailto:order@signalwayantibody.com)Support: [tech@signalwayantibody.com](mailto:tech@signalwayantibody.com)

## Description

Product Name	PSG1 Polyclonal Antibody
Host Species	Rabbit
Clonality	Polyclonal
Purification	The antibody was affinity-purified from rabbit antiserum by affinity-chromatography using epitope-specific immunogen.
Applications	WB ELISA
Species Reactivity	Hu
Specificity	PSG1 Polyclonal Antibody detects endogenous levels of PSG1 protein.
Immunogen Type	peptide
Immunogen Description	Synthesized peptide derived from the Internal region of human PSG1.
Target Name	PSG1
Other Names	PSG1; B1G1; PSBG1; PSGGA; Pregnancy-specific beta-1-glycoprotein 1; PS-beta-G-1; PSBG-1; Pregnancy-specific glycoprotein 1; CD66 antigen-like family member F;
Accession No.	Swiss-Prot: P11464NCBI Gene ID: 5669
Uniprot	P11464
GeneID	5669;
SDS-PAGE MW	46kd
Concentration	1mg/ml
Formulation	Liquid in PBS containing 50% glycerol, 0.5% BSA and 0.02% sodium azide.
Storage	Store at -20°C/1 year

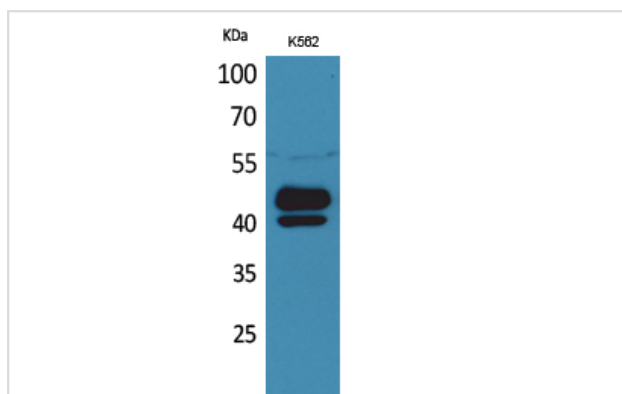
## Application Details

Western Blot: 1/500 - 1/2000.

ELISA: 1/20000.

Not yet tested in other applications.

## Images



Western Blot analysis of K562 cells using PSG1 Polyclonal Antibody

---

Note: This product is for in vitro research use only