

## IGF-IIR Polyclonal Antibody

Catalog No: #41676

Package Size: #41676-1 50ul #41676-2 100ul

Orders: order@signalwayantibody.com

Support: tech@signalwayantibody.com

## Description

Product Name	IGF-IIR Polyclonal Antibody
Host Species	Rabbit
Clonality	Polyclonal
Purification	The antibody was affinity-purified from rabbit antiserum by affinity-chromatography using epitope-specific immunogen.
Applications	WB ELISA
Species Reactivity	Hu
Specificity	IGF-IIR Polyclonal Antibody detects endogenous levels of IGF-IIR protein.
Immunogen Type	peptide
Immunogen Description	Synthesized peptide derived from the C-terminal region of human IGF-IIR.
Target Name	IGF-IIR
Other Names	IGF2R; MPRI; Cation-independent mannose-6-phosphate receptor; CI Man-6-P receptor; CI-MPR; M6PR; 300 kDa mannose 6-phosphate receptor; MPR 300;
Accession No.	Swiss-Prot: P11717NCBI Gene ID: 3482
Uniprot	P11717
GeneID	3482;
SDS-PAGE MW	250kd
Concentration	1mg/ml
Formulation	Liquid in PBS containing 50% glycerol, 0.5% BSA and 0.02% sodium azide.
Storage	Store at -20°C/1 year

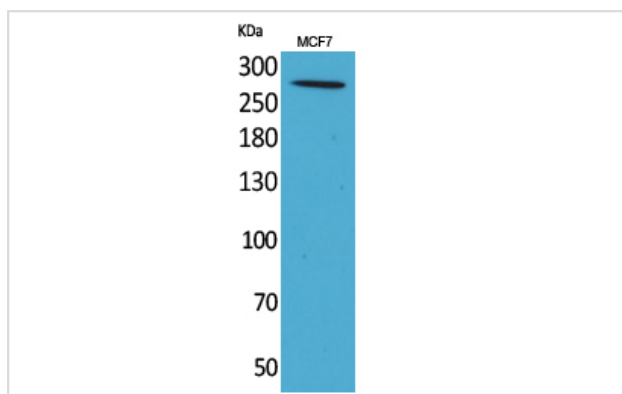
## Application Details

Western Blot: 1/500 - 1/2000.

ELISA: 1/20000.

Not yet tested in other applications.

## Images



Western Blot analysis of MCF7 cells using IGF-IIR Polyclonal Antibody

---

Note: This product is for in vitro research use only