

## Siglec-5/14 Polyclonal Antibody

Catalog No: #41677

Package Size: #41677-1 50ul #41677-2 100ul

Orders: order@signalwayantibody.com

Support: tech@signalwayantibody.com

## Description

Product Name	Siglec-5/14 Polyclonal Antibody
Host Species	Rabbit
Clonality	Polyclonal
Purification	The antibody was affinity-purified from rabbit antiserum by affinity-chromatography using epitope-specific immunogen.
Applications	WB ELISA
Species Reactivity	Hu
Specificity	Siglec-5/14 Polyclonal Antibody detects endogenous levels of Siglec-5/14 protein.
Immunogen Type	peptide
Immunogen Description	Synthesized peptide derived from the Internal region of human Siglec-5/14.
Target Name	Siglec-5/14
Other Names	SIGLEC5; CD33L2; OBBP2; Sialic acid-binding Ig-like lectin 5; Siglec-5; CD33 antigen-like 2; Obesity-binding protein 2; OB-BP2; OB-binding protein 2; CD170; SIGLEC14; Sialic acid-binding Ig-like lectin 14; Siglec-14
Accession No.	Swiss-Prot: O15389NCBI Gene ID: 8778
Uniprot	O15389
GeneID	8778;
SDS-PAGE MW	60kd
Concentration	1mg/ml
Formulation	Liquid in PBS containing 50% glycerol, 0.5% BSA and 0.02% sodium azide.
Storage	Store at -20°C/1 year

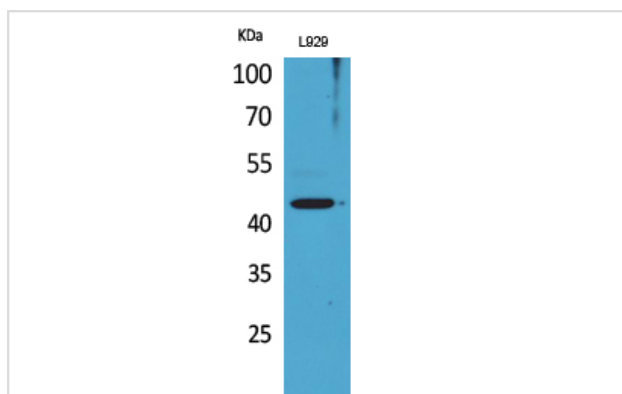
## Application Details

Western Blot: 1/500 - 1/2000.

ELISA: 1/20000.

Not yet tested in other applications.

## Images



Western Blot analysis of L929 cells using Siglec-5/14 Polyclonal Antibody

---

Note: This product is for in vitro research use only