

CD300g Polyclonal Antibody

Catalog No: #41679

Package Size: #41679-1 50ul #41679-2 100ul

Orders: order@signalwayantibody.comSupport: tech@signalwayantibody.com

Description

Product Name	CD300g Polyclonal Antibody
Host Species	Rabbit
Clonality	Polyclonal
Purification	The antibody was affinity-purified from rabbit antiserum by affinity-chromatography using epitope-specific immunogen.
Applications	WB ELISA
Species Reactivity	Hu
Specificity	CD300g Polyclonal Antibody detects endogenous levels of CD300g protein.
Immunogen Type	peptide
Immunogen Description	Synthesized peptide derived from the Internal region of human CD300g.
Target Name	CD300g
Other Names	CD300LG; CLM9; TREM4; CMRF35-like molecule 9; CLM-9; CD300 antigen-like family member G; Triggering receptor expressed on myeloid cells 4; TREM-4; CD300g
Accession No.	Swiss-Prot: Q6UXG3NCBI Gene ID: 146894
Uniprot	Q6UXG3
GeneID	146894;
SDS-PAGE MW	36kd
Concentration	1mg/ml
Formulation	Liquid in PBS containing 50% glycerol, 0.5% BSA and 0.02% sodium azide.
Storage	Store at -20°C/1 year

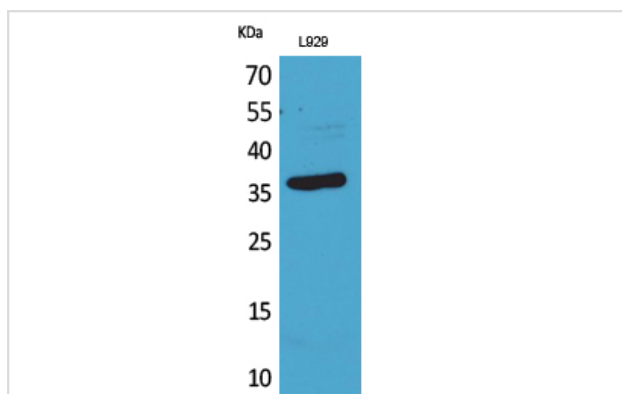
Application Details

Western Blot: 1/500 - 1/2000.

ELISA: 1/20000.

Not yet tested in other applications.

Images



Western Blot analysis of L929 cells using CD300g Polyclonal Antibody

Note: This product is for in vitro research use only