

CD158z Polyclonal Antibody

Catalog No: #41680

Package Size: #41680-1 50ul #41680-2 100ul

Orders: order@signalwayantibody.com

Support: tech@signalwayantibody.com

Description

Product Name	CD158z Polyclonal Antibody
Host Species	Rabbit
Clonality	Polyclonal
Purification	The antibody was affinity-purified from rabbit antiserum by affinity-chromatography using epitope-specific immunogen.
Applications	WB ELISA
Species Reactivity	Hu
Specificity	CD158z Polyclonal Antibody detects endogenous levels of CD158z protein.
Immunogen Type	peptide
Immunogen Description	Synthesized peptide derived from the Internal region of human CD158z.
Target Name	CD158z
Other Names	KIR3DL3; CD158Z; KIR3DL7; KIRC1; Killer cell immunoglobulin-like receptor 3DL3; CD158 antigen-like family member Z; Killer cell inhibitory receptor 1; CD158z
Accession No.	Swiss-Prot: Q8N743NCBI Gene ID: 100133046
Uniprot	Q8N743
GeneID	100133046;
SDS-PAGE MW	45kd
Concentration	1mg/ml
Formulation	Liquid in PBS containing 50% glycerol, 0.5% BSA and 0.02% sodium azide.
Storage	Store at -20°C/1 year

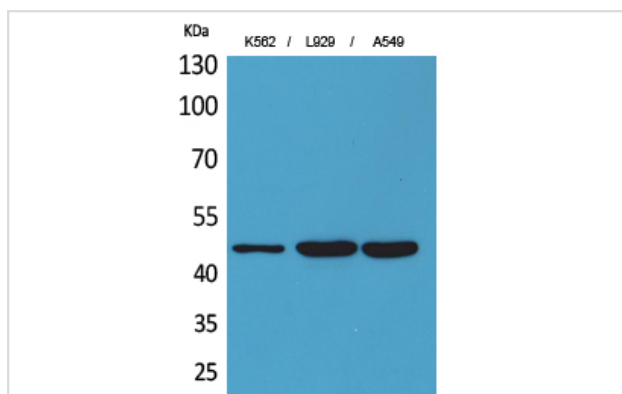
Application Details

Western Blot: 1/500 - 1/2000.

ELISA: 1/20000.

Not yet tested in other applications.

Images



Western Blot analysis of K562 L929 A549 cells using CD158z Polyclonal Antibody

Note: This product is for in vitro research use only