

CD207 Polyclonal Antibody

Catalog No: #41681

Package Size: #41681-1 50ul #41681-2 100ul

Orders: order@signalwayantibody.com

Support: tech@signalwayantibody.com

Description

Product Name	CD207 Polyclonal Antibody
Host Species	Rabbit
Clonality	Polyclonal
Purification	The antibody was affinity-purified from rabbit antiserum by affinity-chromatography using epitope-specific immunogen.
Applications	WB ELISA
Species Reactivity	Hu
Specificity	CD207 Polyclonal Antibody detects endogenous levels of CD207 protein.
Immunogen Type	peptide
Immunogen Description	Synthesized peptide derived from the Internal region of human CD207.
Target Name	CD207
Other Names	CD207; CLEC4K; C-type lectin domain family 4 member K; Langerin; CD207
Accession No.	Swiss-Prot: Q9UJ71NCBI Gene ID: 50489
Uniprot	Q9UJ71
GeneID	50489;
SDS-PAGE MW	38kd
Concentration	1mg/ml
Formulation	Liquid in PBS containing 50% glycerol, 0.5% BSA and 0.02% sodium azide.
Storage	Store at -20°C/1 year

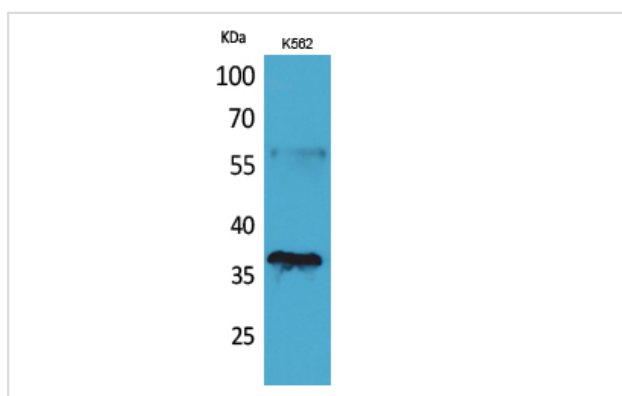
Application Details

Western Blot: 1/500 - 1/2000.

ELISA: 1/20000.

Not yet tested in other applications.

Images



Western Blot analysis of K562 cells using CD207 Polyclonal Antibody

Note: This product is for in vitro research use only