

CD329 Polyclonal Antibody

Catalog No: #41684

Package Size: #41684-1 50ul #41684-2 100ul

Orders: order@signalwayantibody.comSupport: tech@signalwayantibody.com

Description

Product Name	CD329 Polyclonal Antibody
Host Species	Rabbit
Clonality	Polyclonal
Purification	The antibody was affinity-purified from rabbit antiserum by affinity-chromatography using epitope-specific immunogen.
Applications	WB ELISA
Species Reactivity	Hu
Specificity	CD329 Polyclonal Antibody detects endogenous levels of CD329 protein.
Immunogen Type	peptide
Immunogen Description	Synthesized peptide derived from the Internal region of human CD329.
Target Name	CD329
Other Names	SIGLEC8; SAF2; Sialic acid-binding Ig-like lectin 8; Siglec-8; CDw329; Sialoadhesin family member 2; SAF-2; CD329
Accession No.	Swiss-Prot: Q9NYZ4NCBI Gene ID: 27181
Uniprot	Q9NYZ4
GeneID	27181;
SDS-PAGE MW	50kd
Concentration	1mg/ml
Formulation	Liquid in PBS containing 50% glycerol, 0.5% BSA and 0.02% sodium azide.
Storage	Store at -20°C/1 year

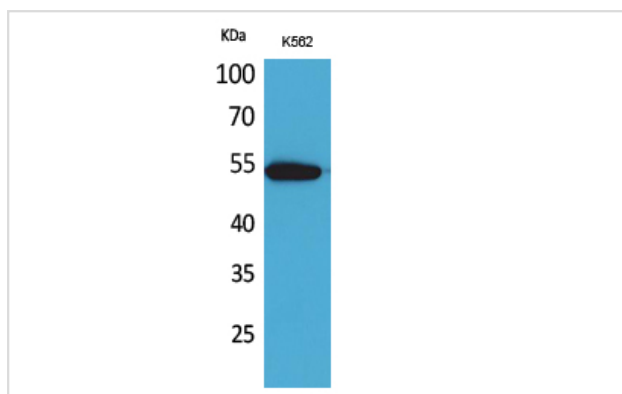
Application Details

Western Blot: 1/500 - 1/2000.

ELISA: 1/20000.

Not yet tested in other applications.

Images



Western Blot analysis of K562 cells using CD329 Polyclonal Antibody

Note: This product is for in vitro research use only