

## SLAM Polyclonal Antibody

Catalog No: #41685

Package Size: #41685-1 50ul #41685-2 100ul

Orders: [order@signalwayantibody.com](mailto:order@signalwayantibody.com)Support: [tech@signalwayantibody.com](mailto:tech@signalwayantibody.com)

## Description

Product Name	SLAM Polyclonal Antibody
Host Species	Rabbit
Clonality	Polyclonal
Purification	The antibody was affinity-purified from rabbit antiserum by affinity-chromatography using epitope-specific immunogen.
Applications	WB ELISA
Specificity	SLAM Polyclonal Antibody detects endogenous levels of SLAM protein.
Immunogen Type	peptide
Immunogen Description	Synthesized peptide derived from the region of human SLAM.
Target Name	SLAM
Other Names	SLAMF1; SLAM; Signaling lymphocytic activation molecule; CDw150; IPO-3; CD150
Accession No.	Swiss-Prot: Q13291NCBI Gene ID: 6504
Uniprot	Q13291
GeneID	6504;
SDS-PAGE MW	37kd
Concentration	1mg/ml
Formulation	Liquid in PBS containing 50% glycerol, 0.5% BSA and 0.02% sodium azide.
Storage	Store at -20°C/1 year

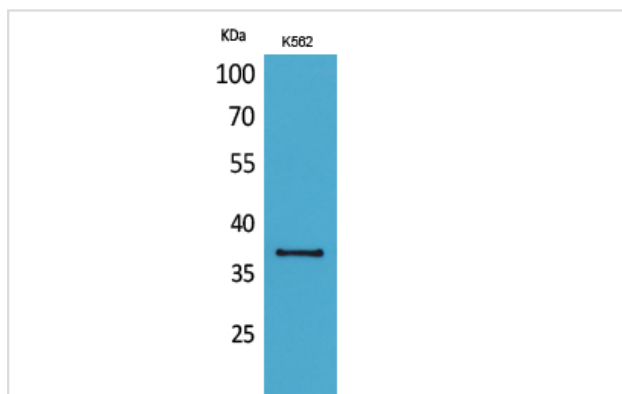
## Application Details

Western Blot: 1/500 - 1/2000.

ELISA: 1/20000.

Not yet tested in other applications.

## Images



Western Blot analysis of K562 cells using SLAM Polyclonal Antibody

---

Note: This product is for in vitro research use only