

CD276 Polyclonal Antibody

Catalog No: #41691

Package Size: #41691-1 50ul #41691-2 100ul

Orders: order@signalwayantibody.comSupport: tech@signalwayantibody.com

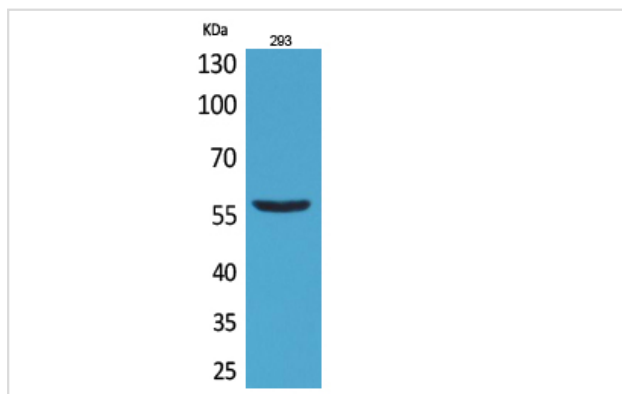
Description

Product Name	CD276 Polyclonal Antibody
Host Species	Rabbit
Clonality	Polyclonal
Purification	The antibody was affinity-purified from rabbit antiserum by affinity-chromatography using epitope-specific immunogen.
Applications	WB
Species Reactivity	Hu Ms Rt
Specificity	CD276 Polyclonal Antibody detects endogenous levels of CD276 protein.
Immunogen Description	Synthesized peptide derived from the Internal region of human CD276.
Target Name	CD276
Other Names	CD276; B7H3; PSEC0249; CD276 antigen; 4lg-B7-H3; B7 homolog 3; B7-H3; Costimulatory molecule; CD276
Accession No.	Swiss-Prot: Q5ZPR3NCBI Gene ID: 80381
Uniprot	Q5ZPR3
GeneID	80381;
Calculated MW	57-100kd
Concentration	1mg/ml
Formulation	Liquid in PBS containing 50% glycerol, 0.5% BSA and 0.02% sodium azide.
Storage	Store at -20°C/1 year

Application Details

Western Blot: 1/500 - 1/2000.

Images



Western Blot analysis of 293 cells using CD276 Polyclonal Antibody

Note: This product is for in vitro research use only