

CD160 Polyclonal Antibody

Catalog No: #41692

Package Size: #41692-1 50ul #41692-2 100ul

Orders: order@signalwayantibody.comSupport: tech@signalwayantibody.com

Description

Product Name	CD160 Polyclonal Antibody
Host Species	Rabbit
Clonality	Polyclonal
Purification	The antibody was affinity-purified from rabbit antiserum by affinity-chromatography using epitope-specific immunogen.
Applications	WB ELISA
Species Reactivity	Hu
Specificity	CD160 Polyclonal Antibody detects endogenous levels of CD160 protein.
Immunogen Type	peptide
Immunogen Description	Synthesized peptide derived from the Internal region of human CD160.
Target Name	CD160
Other Names	CD160; BY55; CD160 antigen; Natural killer cell receptor BY55; CD160
Accession No.	Swiss-Prot: O95971NCBI Gene ID: 11126
Uniprot	O95971
GeneID	11126;
SDS-PAGE MW	20kd
Concentration	1mg/ml
Formulation	Liquid in PBS containing 50% glycerol, 0.5% BSA and 0.02% sodium azide.
Storage	Store at -20°C/1 year

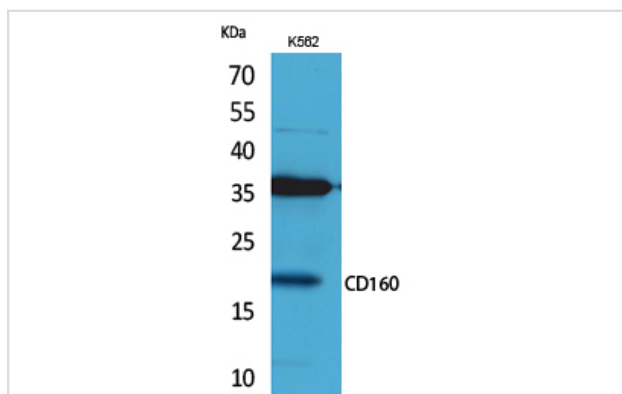
Application Details

Western Blot: 1/500 - 1/2000.

ELISA: 1/20000.

Not yet tested in other applications.

Images



Western Blot analysis of K562 cells using CD160 Polyclonal Antibody

Note: This product is for in vitro research use only