

## MCP-2 Polyclonal Antibody

Catalog No: #41699

Package Size: #41699-1 50ul #41699-2 100ul

Orders: [order@signalwayantibody.com](mailto:order@signalwayantibody.com)Support: [tech@signalwayantibody.com](mailto:tech@signalwayantibody.com)

## Description

Product Name	MCP-2 Polyclonal Antibody
Host Species	Rabbit
Clonality	Polyclonal
Purification	The antibody was affinity-purified from rabbit antiserum by affinity-chromatography using epitope-specific immunogen.
Applications	WB ELISA
Species Reactivity	Hu
Specificity	MCP-2 Polyclonal Antibody detects endogenous levels of MCP-2 protein.
Immunogen Description	Synthesized peptide derived from the C-terminal region of human MCP-2.
Target Name	MCP-2
Other Names	CCL8; MCP2; SCYA10; SCYA8; C-C motif chemokine 8; HC14; Monocyte chemoattractant protein 2; Monocyte chemotactic protein 2; MCP-2; Small-inducible cytokine A8
Accession No.	Swiss-Prot: P80075NCBI Gene ID: 6355
Uniprot	P80075
GeneID	6355;
SDS-PAGE MW	15kd
Concentration	1mg/ml
Formulation	Liquid in PBS containing 50% glycerol, 0.5% BSA and 0.02% sodium azide.
Storage	Store at -20°C/1 year

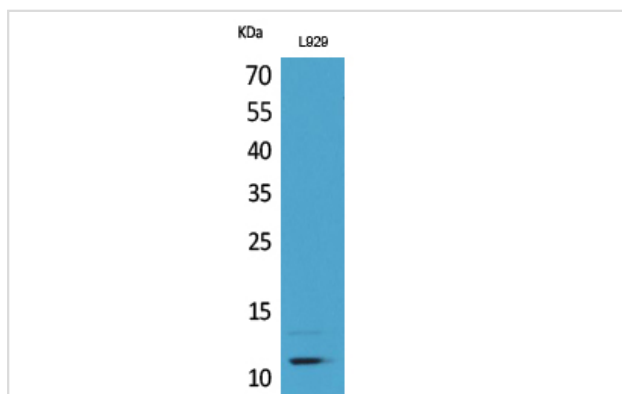
## Application Details

Western Blot: 1/500 - 1/2000.

ELISA: 1/20000.

Not yet tested in other applications.

## Images



Western Blot analysis of L929 cells using MCP-2 Polyclonal Antibody

---

Note: This product is for in vitro research use only